



Kustavi

KINGDOM OF ARCHIPELAGO

KUSTAVI'S TRAVEL- AND SERVICE GUIDE



www.kustavi.fi

CONTENTS



3

KINGDOM OF THE ARCHIPELAGO

Live and enjoy in Kustavi

4

FREE TIME

Free-time resident's irresistible Kustavi

5

EVENTS

Kustavi is happening all year long

6

PROGRAMME PACKAGES FOR GROUPS

Packages that can be altered with the customer's wants

8

KINGDOM OF ARCHIPELAGO FISHING

Info about the glorious fishing grounds of Kustavi

10

TIMETABLES

Travel conveniently via ferry

SIGHTS

Explore diverse sights of Kustavi

KUSTAVI FOR CULTURE SEEKERS

Volter Kilpi's literature week

SERVICE DIRECTORY

Roster of local service producers

MAPS

Navigate in Kustavi with these maps

ADVERTISEMENTS

Favour the local companies

BOTHNIAN SEA NATIONAL PARK

Welcome to the outer archipelago

ASSOCIATIONS

Contact information for active operators

12

13

14

18

22

35

35





KINDOM

of the Archipelago

WELCOME TO THE ARMS OF THE ARCHIPELAGO!

Kustavi is an irresistible archipelago municipality that is developing all the time. We want to offer great services for the voyagers and the residents in this beautiful, oceanic locality.

CLEAN AND SAFE ENVIRONMENT

For a small municipality we have great services and that has interested families with children. We are the first municipalities to offer free children education at the extended daycare Suotorppa and for school aged children we have completely renovated Kivimaa's primary school. Clean and safe environment and services guarantee that families with children enjoys oneself here. Top speed optical fibre, water supply- and sewer system makes telecommuting possible and allows comfortable living.

Thanks to sea and our compelling nature, our population is more than twelve times, when free-time residents and voyagers are on the go. Free-time residents also enable our diverse service providers.

Fishing- and culture traveling, amazing guest harbour, the Archipelago trail and commutes to Åland bring us naturally tourists and these are pleasant ways for them to get know Kustavi and fall in love.

Income tax rate of Kustavi is one of the lowest in the county, 18,5 %. We have a variety of choices in living, small house lots we sell at the price of 0,85 - 3,00 €/m². For the elder we have sheltered accommodation of different kinds. There is also a service center with heart center services in Kustavi.



KUSTAVI IS AN INSPIRING MUNICIPALITY OF RESIDENCE FOR ENTREPRENEURS

Kustavi has a lot of entrepreneurs. You are able to apply for a business assistance from ELY and Leader-enterprise meant for acceptable investments of 25-30 %. Business's in Kustavi is quite versatile. We are proud of all of our entrepreneurs and many successful travel agencies. Our goal as a municipality is to keep on strengthening our vitality with active development.



Veijo Katara, mayor of Kustavi

Volter Kilpi's literature week, Circus festival and salmon market are introduced in this tour guide. These events have their place in free-time residents' and many others' hearts.

Cruises and boat trips to Katanpää Fortification Island, Isokari lighthouse and other sights have been developed offering an experience of a lifetime.

All these events and numerous services are here for you to experience and enjoy! I'm happy to tell you more about Kustavi and our many alternatives.

KUSTAVI

tourist

INFORMATION

A tourist adviser serves in the municipal office from Monday to Saturday in June-August
p. +358 2 842 6620
matkailuneuvonta@kustavi.fi

Kustavi Municipal Office
Keskustie 7, 23360 Kustavi
p. +358 2 842 6600,
fax 02 842 6625
Open Mon-Fri
from 8.15 am to 4 pm
firstname.lastname@kustavi.fi
www.kustavi.fi

Library
p. +358 2 842 6630
e-mail: kirjasto@kustavi.fi

Open: Mon from 3 pm to 6 pm,
Wed from 3 pm to 7 pm,
Thu from 10 am to 4 and
Fri from 1 pm to 6 pm
www.kirjasto.kustavi.fi



STATISTICAL INFORMATION ON KUSTAVI

Surface area...770 km²
Including water area... 604 km²
Shoreline length... approx. 908 km
Summer cottages ... approx. 3100
Population 2018... 925
Income tax percentage in 2019... 18,50



FREE-TIME

Free time resident's irresistible Kustavi

One of a kind nature, amazing connections and sights at the sea, high-class events and variety of cultural selection has gotten a lot of acknowledgement from part time residents. The residents are a remarkable force in the development of the municipality, as the demand for services grows we can enjoy a variety of them in Kustavi. Kustavi is under development continuously and our goal is to increase our services in a year-round basis and create more jobs and livelihoods to the area.

THE BIGGEST COTTAGE COUNTY IN FINLAND - SIX COTTAGERS PER ONE PERMANENT HOUSE

Kustavi has the most cottages in a relation to permanent houses. We have 3 109 cottages and 490 permanent houses (Tilastokeskus 2018). During the summer season, our population grows twelve times bigger than normally, it is a positive and refreshing thing after the winter season.

In the summer Kustavi's main lanes, village roads and guest harbours are being enlivened. Companies and events are filled with people. Services of the municipality are greatly needed, ie. play grounds, construction monitoring, library and culture operations are the most active. Suvimarket brightens up the centrum and offers shopping possibilities along with other shops.

DO YOU WANT YOUR FREE-TIME RESIDENCE TO BE YOUR PERMANENT HOUSE OR MOVE TO KUSTAVI?

The municipality actively supports moving free-time residences to permanent ones. Our high-speed optical fibre link offers a great possibility to work remotely, double-housing or permanent living. Permanent residential building has a lower property tax rate than vacation house's. Speak with your construction inspector about the possibilities of turning your vacation house to a permanent one.

Kustavi is a safe archipelago county surrounded by the sea, with great services and a place to enjoy yourself. Municipality has also many detaches house plots for sale in the centrum and Vartsala. And also rental row houses in the centrum. Discover the sweet options in rentals and sales the private market.

ONE OF THE LOWEST TAX RATE IN FINLAND AND FREE OF CHARGE EARLY CHILDHOOD EDUCATION

Kustavi has one of the lowest tax rates in Finland and it was lowered in a third year in a row. In 2019 it is 18,5%. We are also one of the first counties to offer early childhood education totally free of charge at Suotorppa daycare. For school aged children we have a renovated Kivimaa primary school.

IN THE ASSOCIATION YOU MEET NEW PEOPLE

Portion of the free-time residents takes part in associations, they are a great way to participate in the development of the municipality. Many appreciate the association that comes with involvement. Municipality's old Terveystalo in the centrum will be in the use of associations. Welcome!

COTTAGE TASK FORCE GATHERS TWO TIMES A YEAR

We want to have an open conversation with the cottagers about how they think we should develop the municipality, how things work around here and do they possibly have an interest in taking part of the development?

Mission behind the task force is to increase flow of information and co-operation between the cottagers, permanent residents and the county's trustee. One of the goals of the task force is also bringing forth motions of the cottagers. <https://www.kustavi.fi/kunta/poytakirjat> is the address where you can find current topics. Let's make Kustavi an even better place to live and spend time. We will happily tell you more of our municipality.

Veijo Katara, president of Kustavi
p. +358 785 324, veijo.katara@kustavi.fi
Meri-Tuuli Ojala, building inspector
p. +358 740 006
meri-tuuli.ojala@kustavi.fi





DIVERSE SERVICES ALSO FOR FREE TIME

There are good fishing waters and beaches with saunas by the sea. In the municipality there is a sports field, illuminated running track, sports and youth center, action park, dog park, full frisbee golf-course and Jeremia's nature walk.

The Bothnian Sea National Park offers the cleanest marine-area experience in Finland, from the open seas to sheltered small bays and idyllic islands. The flora of Kustavi includes plants that might have been carried here along the seafarers during the sailing period. *Scopolia carniolica* is the designated official plant of Kustavi.

Active village committees and associations organise a variety of events throughout the year. The traditional Tuulentupa is a great venue for festivities and cultural events.



More information:
www.kustavi.fi

EVENTS

Kustavi is happening all year long

13 January, St. Knut's Day
ST. KNUT'S DANCE AT TUULENTUPA

SPRING ARCHIPELAGO MARKET In April
DAY OF KUSTAVI 6th of June

MIDSUMMER'S EVE

- Decoration and hoisting of midsummer poles in Etelä-Vartsala's Myllymäki ja Pohjois-Vartsala's village at noon
- Peterzens's at 3 pm
- Hoisting of the Rahi midsummer pole at Heikinmäki at 2 pm
- Lomavalkama's Midsummer Festival and hoisting of the midsummer pole at 7 pm

In July

VOLTER KILPI LITERATURE WEEK

10.-14.7.2019 and around the same time in 2020. The programme will be published in March in both years at www.vkkustavissa.

Second Sunday in July at Tuulentupa
SUMMER FESTIVAL AND RAFFLE

First Saturday in August

KUSTAVI SALMON MARKET

At the yard of Kivimaa elementary school from 9 AM to 3 PM

RUNNING EVENT LOHIHÖLKKÄ at 12 AM

Last week of August :

ARCHIPELAGO CULTURE WEEK

ANCIENT BONFIRES

ANCIENT BONFIRES CONCERT AT TUULENTUPA

June-August

SUMMER MARKET

Kivimaa Mon, Wed, Fri and Sat from 10 am to 2 pm

EVENING FLEA MARKET

On Tuesdays from 5 pm to 7 pm

ART EXHIBITIONS IN MUNICIPALITY'S GOVERNMENT HALL AND IN LIBRARY

From mid-November until Christmas Sat and Sun between 10 am to 6 pm

CHRISTMAS VILLAGE

In the Kustavi Handicraft Village November

November

CHRISTMAS OPENING AND CHRISTMAS ARCHIPELAGO MARKET

MÖRK Ö

Mörk Ö, dating to 2016, creates light to archipelago in the middle of the darkest times of the year with its versatile program. Mörk Ö is fully a local event that has been created, coordinated and executed by Kustavi's literature association. Facebook: [morkoviikkokustavi](https://www.facebook.com/morkoviikkokustavi)

PROTECT THE ENVIRONMENT - RECYCLE PROPERLY

RECYCLING POINT AND WASTE CENTER ARE FREE OF CHARGE FOR PRIVATE RESIDENTS

Our Recycling point is located behind the Kustavi's old health centre, Kivimaantie 8. You can bring small metal waste, cardboard, glass and plastic. Waste center is open on Saturdays from 9 AM to 1 PM and through Jun-Aug on Wednesdays from 4 PM to 7 PM. Customers can bring iron waste, energy waste, clean or finished construction waste, garden waste, electricity- and electronic waste, tier waste, cardboard, impregnated wood, window glass and dangerous waste. The address is Viherlahdentie 230 (2,2km from Kustavi to Turku and after that 2,3km drive in Viherlahdentie).

Let's take care of Kustavi's beautiful nature together!



PROGRAM PACKETS FOR GROUPS

Programme packages can be tailor-made according to the customer's or group's wishes.

ALONG KING'S ROAD TO KUSTAVI, TO KILPI'S LANDSCAPES

More information: www.kustavi.fi/ohjelmapaketit.

A DAY IN KUSTAVI

A guided shopping tour in maritime Kustavi includes visits to local artisan's shops, cultural sights and great food in archipelago atmosphere.

The day starts with a cup of coffee in the Kustavi Handicraft Village or at Petérzens's; you are able to purchase Finnish ceramics, candles, handicrafts and clothing in either place. We will ride a bus through the rural landscape of the archipelago to the centre of Kustavi. In the village centre we will explore the handicraft shops for example Keltainen puoti, Merineule and Studio di Moda; handicrafts, knitwear items, art and souvenirs etc. The day also includes a visit to Kustavi's wooden, cruciform church dating back to 1783. There we will get to see the gorgeous votive ships sailors have donated to the church. We will continue our journey along the old mail road to Vuosnainen located on the second largest island of Kustavi. A short sea voyage there will be on the largest cable ferry in Finland. Lunch will be served at the western end of Kustavi, only a half-hour trip away from the Åland Islands. Lunch can be arranged at either Vuosnaisten Meriasema or Spauna. There will be a possibility to buy local products; for example sh and archipelago black bread.

In South Vartsala we will explore the Kustavi Archipelago Museum and hear local tales from old times. It is also possible to have a look at the candles and interior decoration items at Vartsalan Vanha koulu. Then we will head back to Kivimaa for a 'farewell' coffee. The excursion will last 7 to 8 hours. The excursion can be organised in reverse order starting from the centre of Kustavi.

LOMAVALKAMA'S GUIDED DAY EXCURSION

We offer groups a guided trip to maritime Kustavi visiting local artisans and culture, complemented with great food and archipelago atmosphere. During the excursion, we will explore the archipelago church that was completed in 1783; the old mail road, which was considered the most dangerous in the world; archipelago ora; along life in general in the archipelago. We will follow the footsteps of the author Volter Kilpi, maritime counsellor Antti Wihuri and pianist Konsti Vehanen, and hear their stories. During the excursion you are able to make purchases from the local entrepreneurs. The excursion starts at 9 am with breakfast and ends at 4 pm with afternoon coffee. Lunch buffet will be served at 1 pm in Lomavalkama. **Reservations:** p. +358 44 504 2992 / Lomavalkama **More information:** info@lomavalkama.fi, www.lomavalkama.fi

A DAY IN KUSTAVI AND ÅLAND ISLANDS

A guided day excursion from Lomavalkama to maritime Kustavi and Brändö in the Åland Islands. Arrival, breakfast or a lunch buffet according to the arrival time. We always eat before the boat trip and also take snacks with us. We will travel the old mail road to Vuosnainen and along the way we will hear stories about seafaring, boat building and postal services. In Vuosnainen, we will cross the custom borders. The beautiful sea voyage to the port of Åva takes approximately 35 minutes. With a bus we will tour about 25 different islands and learn about the history and contemporary life in the Åland Islands. You will also get a chance to shop, buy souvenirs and to send a postcard with an Åland Islands stamp.

One of the most popular souvenirs here is the archipelago black bread that you can purchase from a local shop. Return on the connection vessel to Kustavi and Lomavalkama. Depending on return time, we will enjoy either a lunch buffet in Lomavalkama or a warm supper. There is a chance to swim. Clothing: practical, non-slip shoes and an outfit suitable for spending the day outside.

Reservations: p. +358 44 504 2992 / Lomavalkama.

More information: info@lomavalkama.fi, www.lomavalkama.fi



KUSTAVI'S CHURCH AND CEMETERY

Kustavi's church is open from mid-June to mid-August on weekdays from 12.00-16.00. In other time by appointment. Changes can be checked in www.kustavinseurakunta.fi or www.kustavi.fi. We offer guided tours to groups in the church and in the church yard.

Guide reservations: +358 2 842 6600 / Municipality of Kustavi, From June to August +358 2 842 6620.

JEREMIAH'S CAVES

A guided excursion on foot to the natural rock formation known as the Jeremiah's caves. Approximately 1,5 hours. Reservations and further information: Municipality of Kustavi, p. +358 2 842 6600. From June to August also Kustavi's Travel Information, p. +358 2 842 6620

HERE AND THERE IN KUSTAVI

A morning or an afternoon excursion according to the customer's wishes. Explore the beautiful sights of Kustavi with a guide. The vehicles include a taxi (1+6 passengers) and minibuses (1+16 passengers).

EXCURSION TO ISOKARI LIGHTHOUSE ISLAND

Isokari Lighthouse Island covers approx. 180 hectares. The Russians built the 50-metre high lighthouse on the island in 1833. Currently the lighthouse is the second highest in Finland and is still a working navigational safety device.

Inquiries: www.isokari.fi, Municipality of Kustavi, p. +358 2 842 6600. From June to August also Kustavi's Travel Information, p. +358 2 842 6620, Uusikaupunki's Travel Information, p. +358 50 420 5333.

TRIP TO KATANPÄÄ FORTIFICATION ISLAND

Katanpää Fortification Island is one of the most unique destinations of the Finnish archipelago. The island's history dates far back to the Russian Empire. **Inquiries:** www.katanpaa.fi, Municipality of Kustavi, p. +358 2 842 6600. From June to August also Kustavi's Travel Information, p. +358 2 842 6620

REGATTA OF PEASANT SAILING BOATS

The regatta of peasant sailing boats has long-standing traditions in the archipelago. Originally it was a race to the best fishing places, the one who got their net in the water first, was also going to get the best catch. Because the boats were mostly made by the owners themselves, there was also a competition to see who was able to make the best and fastest boat. The regatta of traditional peasant sailing boats with their related programme in Kustavi are a great way to experience at first hand the archipelago lifestyle in the old times. In Kustavi you can enjoy the elegant forms of the boats and masterful handicrafts, admire crews dressed in old-fashioned uniform, smell the scent of tar and salt water. The event is being further developed and the latest additions include an archipelago market, theatre performances and traditional music.

Organiser: Kustavin Talonpoikaispurjehtijat Association

More information: www.peterzens.fi, info@peterzens.fi www.vk-kustavissa.fi

NATURE WALK IN KUSTAVI CENTRUM

At the start of the summer a new nature walk will be finished. In the centrum of Kustavi, is produced in co-operation with Selkämeren Ystävät ry, Kustavi's literature association, Kustavi's travelling organisation and municipality of Kustavi. You can start the walk from Kustavi's Municipality Office or in reverse, from Jeremiah's caves. Guide sign can be found from the court of the Municipality Office.

More information: www.kustavi.fi

GUIDES:

Soile Hänninen, Maritta Jalonen, Mirja Järvelä, Tuula-Riitta Karlin, Pirkko Karmakoski, Irja Laine, Ulla-Britt Mattsson, Birgitta Partanen, Eija Räsänen, Tuulikki Räsänen, Marja Santalahti, Ilona Ääritalo.

GUIDE AND PROGRAMME RESERVATIONS:

+358 2 842 6600 Municipality of Kustavi or Kustavi's travel information from June to August +358 2 842 6620.



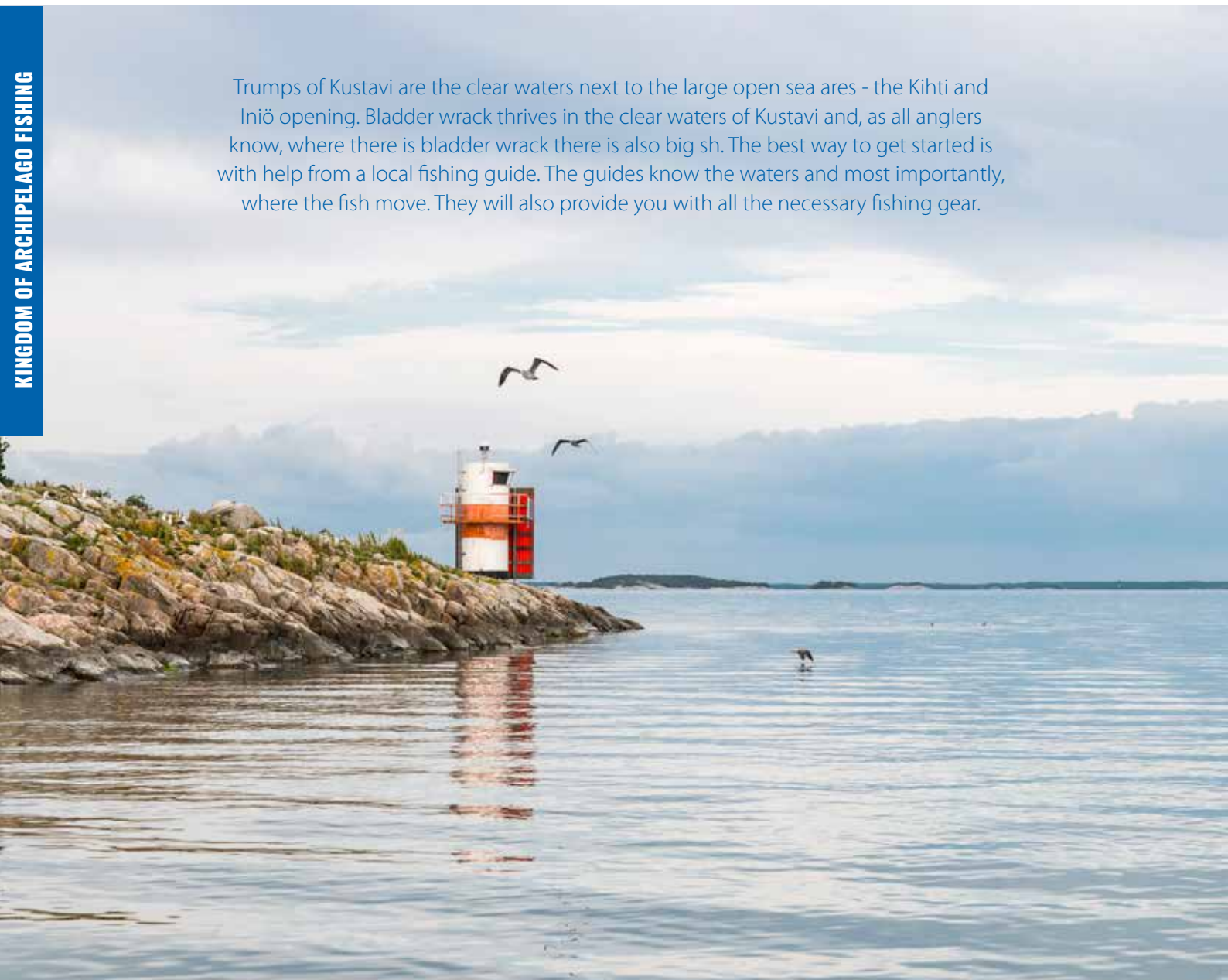


KINGDOM OF ARCHIPELAGO FISHING

Info about the glorious fishing grounds of Kustavi

Kustavi boasts 33 740 ha of water area in total, so there is definitely enough room for fishing tourists. Approx. 900 km of shoreline and 2 000 islands and islets offer a diverse range of fishing sites. We are famous for our excellent fish stocks; pike and perch are most common, zander is ice fished very successfully and in the springtime you should try to catch some whitefish. Remember that in Kustavi there are fishing license areas for trolling too.

Trumps of Kustavi are the clear waters next to the large open sea areas - the Kihti and Iniö opening. Bladder wrack thrives in the clear waters of Kustavi and, as all anglers know, where there is bladder wrack there is also big fish. The best way to get started is with help from a local fishing guide. The guides know the waters and most importantly, where the fish move. They will also provide you with all the necessary fishing gear.



MINIMUM LANDING SIZES OF FISH: ZANDER 42 CM ● SEA TROUT 60 CM ● SEA TROUT (FIN CUT) 50CM

THE GOLDEN RULES OF FISHING IN THE KUSTAVI AREA

- I get my fishing license in time
- I only fish for my personal need
- I keep the waters clean
- I do not invade the privacy of others and I respect their property
- Fishing is prohibited in under 50 m range from marked traps
- I let all the undersized fish back in the water to grow
- I am a good example for other fishers
- I mark my traps correctly
- I keep my fishing permit with me in case of monitoring
- Kustavi's fishing area recommends appeasing the fishing of pike in its spawning period in May.



**LICENCES: WWW.ERÄLUVAT.FI, R-KIOSKI
OR CALL +358 20 692 424
(FROM 8 AM TO 4 PM)**

Kustavi's fishing area covers all the areas around the municipality and plants sea trouts, whitefishes, zanders and perches in a yearly basis.

You can take part in the planting. Please contact Vesa Liukkonen, +358 400 526 353



FINLAND'S LARGEST STUDY OF PIKE UNDERWAY IN KUSTAVI

What to do when you catch a marked fish? You can take the fish and eat it, but the most beneficial thing to do in the terms of research is to record the following information and release the fish back into the sea.

Write down the following:

- Identification data from the mark on the fish
- The weight and length of the fish
- Time of capture
- Location of capture (coordinates)

Send the data electronically to: www.rktl.fi/kala/kalavarat/kalamerikintä/By mail free of charge: RKTl, Merkki; 5005751, 00003 Vastauslähetyks. A reward of 5 euros will be paid for returned marks.



MARK THE TRAPS

Left: A trap at a depth of over 1,5 m in a water traffic area must be marked with a single flag.

Right: A trap at a depth of over 1,5 m in a water traffic area must be marked with a double flag.

Traps must always be marked with the angler's name and contact information.

● **SEA TROUTS WITH AND ADIPOSE FIN ARE PROTECTED AT ALL SEA AREAS**



TIMETABLES

saaristolautat.fi (routes, timetables, contacts fi-sv-en)

FERRY TIMETABLES

VARTSALA FERRY

p. +358 400 138 239 • www.finferries.fi

Valid until further notice. Rights to timetable changes are reserved. At night (22-05), the ferry runs by appointment. Break times: 8:20-8:40, 10:50-11:10, 16:50-17:10, 19:50-20:10. Between 22-05 the ferry runs by appointment.

VARTSALA, from the direction of Åland

05:00	05:30	06:00	06:30	07:00	07:30
08:00	08:40	09:00	09:20	09:40	10:00
10:30	11:10	11:30	11:50	12:10	12:30
13:00	13:30	14:00	14:30	15:00	15:20
15:40	16:00	16:30	17:10	17:30	18:00
18:30	19:00	19:30	20:10	20:30	21:00
21:30	22:00				

KIVIMAA, from the direction of Turku

05:10	05:40	06:10	06:40	07:10	07:40
08:10	08:50	09:10	09:30	09:50	10:10
10:40	11:20	11:40	12:00	12:20	12:40
13:10	13:40	14:10	14:40	15:10	15:30
15:50	16:10	16:40	17:20	17:40	18:10
18:40	19:15	19:40	20:20	20:40	21:10
21:40					

The length
of Vartsala route:
952m



RENGASTIE ROUTE

INIÖ/KANNVIK - KUSTAVI/HEPONIEMI

AURA

p. +358 400 320 093 • www.finferries.fi

mon-sun, 1.1. - 16.6.2019 + 12.8. - 31.12.2019

From	Mon	Tue	Wed	Thu	Fri	Sat	Sun
Kannvik	06.30	6.30	6.30	06.30	06.30		
Kannvik	07.30	07.30	7.30	07.30	07.30	07.30	
Kannvik	09.30	09.30	09.30	09.30	09.30	09.30	
Kannvik	11.00	11.00	11.00	11.00	11.00	11.00	11.00
Kannvik	14.45	14.45	14.45	14.45	14.45		14.45*
Kannvik	15.55	15.55	15.55	15.55	15.55	15.55	15.55
Kannvik	18.00	18.00	18.00	18.00	18.00	18.00	17.30#
Kannvik	20.30		20.30		20.30		19.15#
Heponiemi	07.00	07.00	07.00	07.00	07.00		
Heponiemi	08.10	08.10	08.10	08.10	08.10	08.10	
Heponiemi	10.10	10.10	10.10	10.10	10.10	10.10	
Heponiemi	11.45	11.45	11.45	11.45	11.45	11.45	11.45
Heponiemi	15.20	15.20	15.20	15.20	15.20	15.20	15.20*
Heponiemi	16.30	16.30	16.30	16.30	16.30	16.30	16.30
Heponiemi	19.00	19.00	19.00	19.00	19.00	19.00	18.30#
Heponiemi	21.00		21.00		21.00		19.55#

* Only from 1.4.-31.10. On holidays:

Sunday's timetables

Not on 21.4.. (Easter Day) and 25.12. (Christmas Day)

18.4. Friday's timetable (Maundy Thursday), 24.12. Saturday's timetable (Christmas Eve)

Cars need to be ready to go 10 minutes before departure time. Privileges under the license from ELY.

Shift is reserved for moving hazardous materials, number of passengers limited.



RENGASTIE, THE ARCHIPELAGO TRAIL ALSO KNOWN AS THE “PEARL NECKLACE ROAD” TRAVELS THROUGH BEAUTIFUL ARCHIPELAGO SCENERY. THE ROAD TAKES YOU FROM KUSTAVI TO INIÖ, HOUTSKÄR, KORPPÖ, NAUVO, PARAINEN, TURKU AND BACK TO KUSTAVI.

29.4 - 16.6 och 12.-31.8.2019

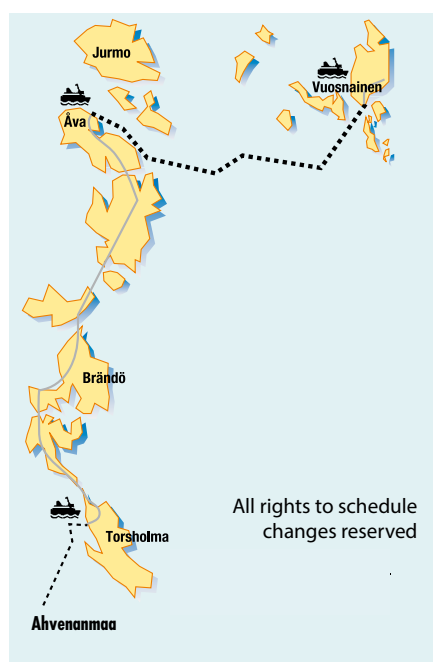
NORTH ROUTE M/S VIGGEN



M/S VIGGEN Car space reservations:
Ålandstrafiken, p. +358 18 525 100

www.alandstrafiken.ax

Passengers: 250, Passenger cars: 52
Buses: 4, Café: Yes, Meals: Vuosnainen–
Åva–Vuosnainen, p. +358 400 330 455,
fax +358 400 330 355



All rights to schedule
changes reserved

OSNÄS – ÅVA

ÅVA – OSNÄS

Dagen	Osnäs (Gustavs)	Åva (Brändö)	Åva (Brändö)	Osnäs (Gustavs)
Monday				
	08:35*)	09:15	07:50	08:30
	13:30	14:10 N)	12:40 N)	13:20
	16:30	17:10 N)	15:10 N)	15:50
	20:45	17:30 A)*)	17:30 A)*)	18:10
Tuesday				
	07:00	21:20 A)	21:25 N)	22:00
	11:30	07:35 N)A)	07:50 A)	08:30
	13:30	12:10 N)	12:40 N)	13:20
	16:30	14:10 N)	15:10 N)	15:50
	20:45	17:10 N)	18:00 A)	18:40
Wed & Thu				
	07:00	21:25 A)	21:25 N)	22:00
	13:30	07:35 N)	09:05 N)	09:45
	16:30	14:10 N)	15:10 N)	15:50
	19:00	17:10 A)	18:00 A)	18:40
Friday				
	07:00	19:40 N)	21:25 N)	22:00
	13:30	07:35 N)	09:05 N)	09:45
	16:30	14:10 N)	15:10 N)	15:50
	19:00	17:10 A)	18:00	18:40
	20:45	19:40 N)	19:55 K)	20:35
Saturday				
	07:00	21:20 A)	21:25 N)	22:00
	13:00	07:35 N)	09:05 N)	09:45
	18:00	14:30 N)	14:30 N)	15:10
	19:45	18:45 N)	19:00	19:40
Sunday, holiday				
	12:20	20:25 A)	11:30 A)	12:10
	15:10	13:00 N)	14:20 N)	15:00
	18:00	15:50 N)A)	16:40 A)	17:20
	20:45	18:40 N)	19:40 N)	20:20

N) Connection to the Northern line ferry in Torsholma. Motor road between Torsholma and Åva is about 20km.

A) Connection to Asterholma's route in Toursholma.



SIGHTS

KUSTAVI'S WOODEN CRUCIFORM CHURCH DATING BACK TO 1783

The sea is present in the church as well; the beautiful votive ships there are symbols of the gratitude of ancient seafarers to their home parish

MEMORIAL OF THE ST. JOHN'S CHAPEL

In North Vartsala is a reminder of the oldest church in Kustavi. It was demolished in 1783, when the St. Jacob's Chapel was transferred from Vähä-Rahi to Kivimaa. The chapel cemetery is an ideal place for reflection and sensing the devotion in the ancient church services.

KUSTAVI'S ARCHIPELAGO MUSEUM

In South-Vartsala, Vartsalantie 208. Open from mid-June to the end of August, Sundays between 1 pm to 4 pm. See the daily opening hours www.kustavi.fi. Otherwise open by appointment. Kustavi Municipality Travel Information, +358 2 842 6620 or +358 2 842 6600

KUSTAVI HANDICRAFT VILLAGE

(Kustavin Savipaja and Paratiisipaja)

MONUMENT TO THE FINNISH WAR PETERZÉNS IN PARATTULA HANDICRAFT STORES IN THE CENTRE OF KUSTAVI PENINSULA OF VUOSNAINEN AND ITS VARIOUS ACTIVITIES

JEREMIA'S CAVES, a natural rock formation in Kivimaa THE GREAT MAIL ROAD



KATANPÄÄ FORTIFICATION ISLAND



Sailors in Kustavi have a splendid place to visit, The Katapult Fortification Island that is still developed as a nature resort. Katapult is located in the northern part of Lypertö. Katapult fortification at the mouth of Strööm was built during the Tsarist era to safeguard and monitor the traffic in the important coastal routes.

Artillery batteries and defensive positions built on the terrain are reminiscent of the work done by Finland's coastal artillery in order to secure our independence. The quarry area and the austere, rocky harbour tell the story of the period when Katapult served as a prison island. Between cliffs and crags lie the lush, in places grove-like areas that reflect the delicate side of the archipelago nature. The historical buildings in Katapult and the unique environment offer unforgettable atmospheres and experiences of the "old world".

It is easy to take an independent tour of the area by following the marked routes designed to protect the delicate archipelago nature. Signs along the route provide central information on the historical sites and events. On guided tours, you will hear stories about the fortification's history and the everyday life of the men that defended Katapult and their families on the isolated island.

Control over Katapult has been transferred from the Finnish Defence Forces to Metsähallitus; and the development of the area for tourism purposes according to sustainable development principles is well on its way. Safeguarding nature values, repairing old defence devices and buildings as well as developing and improving services for visitors are challenging tasks.

www.katapult.fi



ISOKARI LIGHTHOUSE

Dating back to 1833

Isokari in outer archipelago has the most charm of all the destinations in the southern part of the Bothnian Sea. Lighthouse dating back to imperial Russia is the most important attraction of the island. The lighthouse keeps the century old traditions of sea-faring alive today with it's navigation system still in working order. The lighthouse keepers house serves as a summer hotel and a small but lively guest harbour is visited by tens of boats at the hottest days of summer.

Isokari is a part of Selkämeri National Park and it's nature surprises most of the visitors with it's diversity. On the large island (approx. 180 ha) you find a big variety of sights, such as; flourishing groves; dry meadow and swamps bursting with berries. The sheep take part in nurturing the heritage landscape that is also restored with voluntary work. The bird population is rich and the flora quite special, for example three different kinds of moonworts. Isokari just might be the only place in Finland where you are able to hear a thrush nightingale singing in a grove and see a seagull gliding over the sea! In the island there is a nature walk. There are many great swimming beaches untouched and the water is clear through the summer. There is part of the beach especially reserved for children and a playground.

To the Isokari Lighthouse Island you can get with M/S Kerttu (from Uusikaupunki), by a taxi boat or with your own boat. The travel season is 2.5.-30.10. and the midsummer sailing season 28.6.-13.8. Check the website for Isokari's events and cruises up to date www.isokari.fi

Services in Isokari: Guest harbour, cruises, nature expeditions, summer hotel, conference rooms, with appointment restaurant and sauna, café, souvenir shop, nature trail and guide services.





KUSTAVI FOR CULTURE SEEKERS

Volter Kilpi's literature week



VOLTER KILPI

Author Volter Kilpi (1874-1939) was born in Laupus, Pietilä and spent his childhood there. His summer house, Lintukoto, was also located in Kustavi, ashore Strööm. Kilpi has been buried in Kustavi's churchyard.

Volter Kilpi is best known for his Archipelago trilogy: *Alastalon salissa* (1933 - "In the Parlour at Alastalo"), *Pitäjän pienempiä* (1934 - "The Humbler People of the Parish") and *Kirkolle* (1937 - "On the Way to the Church"). Events of the Archipelago trilogy are based on Kustavi's rustic sailing golden ages. You could say that the main features of Kilpi's work are his unique way of using the Finnish language and his stream of consciousness technics. Thanks to these features he and his works have become a significant part of Finnish High Modern literature.

COME AND JOIN THE KUSTAVI LITERATURE ASSOCIATION

Association's goal is to make Kustavi a literature municipality well known in Finland. The annually held Literature Week assembles friends of literature to beautiful, summery Kustavi. The association coordinates also Mörk Ö-event held in November. It creates light, life and happiness and to archipelago in the middle of the darkest times of the year.

As a member of the association You have a chance to communicate with other fans of literature and You have a chance to be a part of the Literature Week. Members can also purchase tickets with a discounted price. Membership costs 20 euros a year, supporting membership 70 euros a year and life membership is 200 euros single payment. Membership fee can be paid to the Kustavi Literature Association's account: (Lounaisrannikon Op) FI73 5191 0020 0013 33. Remember to write your name and contact information to the message box when you make the payment!

Additional information:
www.vkkustavissa.fi

www.vkkustavissa.fi
Facebook: [vkkustavissa](https://www.facebook.com/vkkustavissa)
Instagram: [volterkilpikustavissa](https://www.instagram.com/volterkilpikustavissa)
Twitter: [vkkustavissa](https://twitter.com/vkkustavissa)





SERVICE DIRECTORY

Roster of local service producers

1 Number before the company indicates location of the map (page 16-19), mark after the name of the company indicates to entrepreneurs advertisement and it's page number. Postal code of Kustavi is 23360 and it's area code is (02).

ANTENNAWORKS

20 KUSTAVIN ANTENNI JA PESULA ➤ S. 24
Ari Varjonen, p. +358 440 5998 591. Vartsalantie 175, Kustavi. Replacements of antennas, installations and measuring, consultation and supply sales.

ATK-SERVICES

DAVINIKI OY ➤ S. 34
Sipintie 2, 23360 Kustavi +358 45 697 2534, +358 50 5565 772

CAR REPAIR SHOPS

54 KUSTAVIN AUTOKORJAAMO ➤ S. 22
huolto@kustavinkorjaamo.fi
Kustavintie 5129, p. +38 41 502 5440
- Car and small-machine repair shop, maintenance, repairs, spare parts.

DIGITAL MARKETING

BOAZ MARKETING OY
Iniöntie 372, 23360 Kustavi
p. +358 44 077 8114, www.boazmarketing.fi
Digital marketing, Facebook, Google Ads and webshops.

CHARTER CRUISES AND TRANSPORTATIONS TO ISLANDS

KUSTAVIN CHARTER
Cruises just how you like them ie. popular Pirtu- and Katanpää's cruises
Transportations to cabin islands.
p. +358 400 412 013 sniba@kustavincharter.fi

GRINDING PRODUCTS MANUFACTURE AND SALES

OY PUREVA AB ➤ S. 23
p. +358 842 5000, fax 842 5020
pureva@pureva.fi, www.pureva.fi
- Cutting and grinding disc.

HOSTING SERVICES

26 ISÄNNÖINTIPALVELU ALITALO
p. +358 44 7544 600,
Loukkuja 2, 23360 Kustavi,
kimmo.alitalo@isannointiwarma.fi
www.isannointialitalo.fi
- Property and road hosting services, accounting.

WASTE TRANSPORT

KULJETUS- JA NOSTOPALVELU MARKKU SALMINEN ➤ S. 24
p. +358 400 787 044
- Garbage and freight transport, wells emptying, earthworks.
72 KUSTAVIN JÄTEASEMA
Viherlahdentie 239
- Open on normal Saturdays from 9 AM to 13 PM
Waste transportation in Kustavi, Remeo Oy
p. 010 540 153.

SHOPS

42 KELTAINEN PUOTI ➤ S. 23
Kärtyntie 1, p. +358 841 5670,
keltainen.puoti@gmail.com
- Giftware, business Post office, travel services, laundry services, handicraft supplies, boots.

52 KUSTAVIN TALOUSKAUPPA/NESTE ➤ S.23
Kustavintie 5175, puh. 877 735

33 SALE MAJAKKA ➤ S. 23
Pleikiläntie 2, p. +358 10 764 3530, www.tok.fi
- Grocery shop.

VSP SHOP ➤ S. 23
Rauhankatu 6, Uusikaupunki, p. 845 4600
vspshop@vsp.fi, www.vspshop.fi
- ICT shop that carries everything from mobile phone subscription to equipment to TV channel packages.

FISHING TRIPS

KALASTUSOPAS VESA LIUKKONEN ➤ S. 24
- Fishing advising, Hullu Kalastajan shop, fishing gear, boat trips. Vuosnaistentie 621, Kustavi
p. +358 400 526 353,
vesa.liukkonen@siliprofil.inet.fi

36 MERENPOLKU KY
Fishing trips, boat trips, boat rental.
Wihurintie 18. Vesa Koskinen, fishing guide
p. +358 400 522 720, facebook/merenpolku,
merenpolku@gmail.com

PROPERTY MAINTENANCE, WOODWORK AND CLEANING SERVICES

78 KIINTEISTÖPALVELU SIUSLUOTO ➤ S. 31
+358 50 633 03, esa@siusluoto.fi,
www.siusluoto.fi. Cottage caretaker work,
tree felling, ozonisation, composting toilets,
construction services, piers, terraces and supply transports to the archipelago etc.

30 KUSTAVIN SAARISTOPALVELU
Prikitie 6, p. 044 579 1093.
- Traditional and reliable caretaker work for summer and local residents.

73 KUSTAVIN TUHATAPU
Lasse Luhtala, p.358 44 0270360, +358 44 0270364,
kustavin.tuhatapu@gmail.com, cottage caretaker,
workboat, buoys, piers, renovations, small
wastewater treatment systems and composting
toilets. RESIDENTIAL CONTAINERS SHIPPED.

41 LÄNSI-SUOMEN KIINTEISTÖPALVELU OY ➤ S. 30
Kärtyntie 3, Kustavi, Johnny Nieminen: +358 40 512 8922, Jari Nieminen: +358 40 703 6533,
www.lansi-suomenkiinteistopalvelu.fi
Construction work, renovations, piers.

50 MARJANIEMEN KIINTEISTÖHUOLTO
Salmenrannantie 120, p. +38 45 263 3350
kustavinmarjaniemi@gmail.com
- Cottage caretaker
- Rewood

35 RANNIKON HUOLTOHOMMA OY
Peltoluhta Marko, Itärannantie 11,
p. +38 40 872 9279 huoltohomma@gmail.com
www.rannikonhuoltohomma.net
- Cottage caretaker, construction work and renovations.

74 SAARISTON KOTI- JA SIIVOUSAPU ➤ S. 24
Tanja Valtonen, p. +358 44 968 2774
tjvaltonen@gmail.com
- Cleaning work, window washing, yard work, painting work. By boat to the archipelago, gutter and roof cleaning, reed cutting.

61 VAINIO, TAPIO
Lakiamäentie 12, puh. 044 269 6654
- Suoritetään rahtisahausta.

BEAUTY SALONS

48 KAUNEUSHUONE KUSTAVIN KOSKETUS
Facials, manicures and pedicures, Yumi Lashes
lash permanent curving SKY-cosmetologist Kirsi
Marja Arosuo, Keskuskuja 1, 23360 Kustavi,
p. +358 41 501 6424,
fb/kauneushuonekustavinkosketus

CITIES, MUNICIPALITIES, PARISH

BRÄNDÖ ➤ S.22

TAIVASALO ➤ S.22

UUSIKAUPUNKI ➤ S.22

KUSTAVIN FÖRSAMLING
p. +358 876 138, www.kustavinsrk.fi

ROAD HAULAGE SERVICES

34 KULJETUSPALVELU J. SIUSLUOTO KY ➤ S. 24
Kuninkaantie 10 C, www.jsiusluotoky.fi
puh. 0400 831 426, info@jsiusluotoky.fi
- Kuljetukset kuorma- ja pakettiautolla.

BUS TRAFFIC

45 TILAUSSIENNE JUKKA LAHTI ➤ S. 33
puh. 0400 226 419, www.kustavintaksi.fi
Pikkubussit 16, 19 ja 22 hlö.

EARTH-MOVING

75 KAIUUUPALVELU PEKKA LEHTONEN
Excavation works with expertise.
Vanhanientie 16, 23360 Kustavi
p. +358 400 223 158,
kaivuupekkalehtonen@gmail.com

81 JANNEN LOHI
Experienced professional in the field of
excavation work and sea transportation.
machinery demolition works, ground working,
sewer- and cable works. Also in islands!
Matias Juslin p. +358 40 7188 100,
www.jannenlohi.fi, FB Jannen Lohi

63 KAIUUUPALVELU PETTERI LEHTONEN ➤ S. 31
Kaivuutöitä ja louhinnat, yhdyskuntateknikon
ammattitaidolla, INFRA ry:n jäsen

Taalintie 16, 23360 Kustavi,
kaivuukustavi.fi, 0400 923 456,
petterinkaivuupalvelu@gmail.com

19 KAIVONPORAUS STENMAN KY ▶ S. 32
Klupirannantie 2 as 2, p. +358 400 826 901
kaivonporaus.stenman@gmail.com
- Bore wells to the mainland and islands,
transport in the archipelago, berths.

58 KEVON KONETYÖ
Petteri Kulmala, Notholmantie 1,
p. +358 400 525 229
- Excavation work and rock excavation.

64 PASI ÄÄRINEN ▶ S. 32
Sarkatie 17. p. +358 40 514 2000,
pasi.aarinen@gmail.com, maanrakennuspasi.fi
- Earthworks with experience and professionally.
- Diamond drilling, small-scale rock excavation.

80 ROMU URPO OY ▶ S. 31
Timo Urpo p. +358 400 521 203,
timo.urpo@gmail.com
- Crushed stone, soil, gravel, rocks, etc.
- Road construction, excavation, earth-moving
work, etc.

ACCOMMODATION, FOOD AND COURSE PLACES

76 FRIISILÄ FARM'S SUMMER CAFÉ AND FARM SHOP
p. +358 40 763 4444/ Mari,
+358 45 137 9338/ Timo
www.friisilantila.fi. Baked goods baked at
the farm, also from order, animals, potatoes,
vegetables and berries, also summer flowers

21 JUHLATILA MAININKI ▶ S. 25
Keskuskujalla 1, 23350, p. +358 400 954 731,
Kustavi Celebration space for a successful family
gatherings. Respecting the traditions but still
modern and innovative.

21 JUUVANNIN MERENRANTAMÖKIT ▶ S. 25
Lasse Jalonen, Viliskerintie 27, www.juuvanni.fi.
p. +358 45 137 9338, juuvanni@juuvanni.fi
Log cabins by the sea for short- or long-term
use around the year, shing and camping
possibilities. Boat slipway and canoe rental.

43 CAFE RESTAURANT SUALANE
Kivimaantie 11, 23360 Kustavi,
p. 358 44 971 0150 Restaurant, cafe, A-license,
accommodation, order sauna, catering

3 KATANPÄÄ ▶ S. 27
p. +358 400 590 868 (harbour/sauna)
+358 45 128 3508 (café/accommodation)
info@katanpaa.fi
- Guest harbour, café.

79 KUSTAVIN SAVIPAJA OY ▶ S. 32
Iniöntie 411 B, p. +358 845 7700
- Café, soup lunch, baguette kiosk and
handicraft village. Check the opening hours:
www.kustavinsavipaja.fi

6 KUSTAVIN LOOTHOLMA ▶ S. 27
Kuninkaantie 193, p. +35850 556 0440,
info@lootholma.fi, www.lootholma.fi
- Year-round cottage accommodation, beach
restaurant, guest harbour, camping area, boat
fuel distribution, beach. Dances every Saturday
from Midsummer to the end of August.

31 KUSTAVIN KROUVI ▶ S. 25
Kärtyntie 5, Kustavi, p. +358 40 845 8844,
FB: ravintolakustavinkrouvi
Tasty pizza and other grill products year-round.
Alcohol license.

55 LOMAVALKAMA OY ▶ S. 27
Valkamantie 81, p. +358 400 621 490,
+358 44 504 2999 (trips) info@lomavalkama.fi,
www.lomavalkama.fi. Accommodation, guided
trips in the archipelago, camps, conferences,
programme services, etc. by the beach year-round.

2 PETERZÉNS ▶ S. 27
Parattulan rantatie 16, Parattula
p. +358 50 350 8346, leontinap@gmail.com
www.peterzens.fi. Cozy archipelago restaurant
/Café, hotel, 14 unique thatched-roof cozy
cabins, factory outlet / exhibition, guest harbor,
designshop, shop and garden golf.

SAARISTO SIIDERI OY ▶ S. 34

- B&B offers accommodation services, cider
tastings and restaurant services at Kivimaa, in
the centrum of Kustavi. Reservations to:
+358 465 927 668 or majoitus@saaristosiiideri.fi
www.saaristosiiideri.fi

17 SPAUNA ▶ S. 34

Vuosnaistentie 617, p. +358 2 877 339,
+358 44 241 0066, www.spauna.fi,
spauna@spauna.fi.
- Cottage accommodation through the year, à la
carte restaurant, take away dishes, lunch buffet
in the summer, bar café, grocery and lifestyle
shop, boat- and bike rental, plenty of summer
events; follow us in facebook.

38 TAMMINIEMEN LOMAMÖKIT ▶ S. 25

Tiina Mäenpää, Laupustentie 108,
p. +358 41 432 1809, tiina.maenpaa@kustavi.fi,
www.tamminiemenlomamokit.net
- Peace and quiet of the countryside in 2-6
person holiday cottages by the sea.
- Excellent fishing possibilities, slipway, cottages
for short- or long-term use.
- Affordable summer rooms along the
archipelago route.

1 VUOSNAISTEN MERIASEMA ▶ S. 26

Vuosnaistentie 616, P. +358 2 877 512
www.vuosnaistenmeriasema.com,
meriasema@kustavi.net
- Restaurant, café, summer bakery, guest
harbour, accommodation, open-by-order sauna.

FORESTRY

58 KEVON KONETYÖ

Notholmantie 1, p. +358 400 525 229
- Cutting of problematic trees with a motor
saw and other cuttings with a digger/guillotine
grabber.

MOTORCYCLE REPAIR SHOPS

59 BIKE FELLOWS OY

p. +358 40 703 6543, Verstaskatu 17,
20360 Turku, Iniöntie 274, 23360 Kustavi.
- Repair and maintenance of motorcycles, four-
wheeled mopeds and ATVs, pick-up service.
www.bikefellows.fi

EXPERIENCES

53 RAHIN KOTIELÄINPIHA ▶ S. 32

Rahintie 561, 23360 Kustavi
- Farm animals. Donkeys, cows, goats etc.
Open June-August 12-18 every day.
Marjatta +358 40 535 5588
Ilpo +358 500 826 299

JASKAN POLKU

- Group activities and experiences to bachelor
parties, birthdays and recreational days.
asiakaspalvelu@jaskanpolku.fi,
p. +358 505579108

21 TREK'N FOOD KUSTAVI

Viliskerintie 27, p. +358 45 137 9338/Sami
trekfood.kustavi@gmail.com
- Nature and outdoor experiences, canoe rental
and courses

PROGRAM SERVICES

51 ARTEATRO ▶ S. 28

Salminiituntie 37, p. +38 50 430 7928, info@
artteatro.com, www.artteatro.com
- Circus and variety art programme
services. Exciting and thrilling, high-quality
entertainment for your event.

BANKS AND ACCOUNTING COMPANIES

TILISEPPÄLÄ

Kirsti Seppälä, KLT
Kauppakuja 2, 21200 Raisio
+358 500 785 108, kirsti@tiliseppala.fi
- Accounting and financial statement services.
www.tiliseppala.fi

39 KUSTAVIN LASKENTA OY

Kivimaantie 22, p. +358 876 447,
+358 440 876 705, www.kustavinlaskenta.fi
laskenta@kustavinlaskenta.fi
- Accounting company, copying service. Also
colour copies.

40 OP LOUNAISRANNIKKO

Kustavi's Office, Kivimaantie 20
p. +358 10 253 9801, fax 010 253 9898
- OTTO cash machine, OP insurance services,
property & hosting services of OPKK.

SMALL MACHINE- AND BOAT MAINTENANCE

67 KUSTAVIN PUUVENE

Niittulantie 21, Asko Saloranta,
p. +358 40 900 8872, asko.saloranta@kustavi.net
www.kustavinpuuvene.com
- Boats, bathrooms, renovations.

62 PIENKONEKESKUS ▶ S. 29

Rahintie 276, +358 40 551 4495 Rami
+35850461 9052 Tommi
+358 440 404 313 Aku
- Yamaha, Honda ja Mercury sales and
maintenance, winter storage of boats.

22 VENEPALVELU SIUSLUOTO ▶ S. 33

Esa Siusluoto, Mastotie, p. +358 50 63303,
esa@siusluoto.fi, www.siusluoto.fi
- Winter storage of boats, docking, boat
maintenance, bottom paintings, washing,
waxing, soda- and glassblasting, supply
transports to the archipelago, etc.

CONSTRUCTION, PAINTING, MASONRY, HPAC AND ELECTRIC CONTRACTING

68 JUSSI RANTANEN

Niittulantie 11, p. +358 400 765 133,
jussirantanen.kustavi@gmail.com
- Water and sewage pipe installations.

HALONEN MILLA

Building carpenter, painter, window
restorations, backing paper works etc other
construction work, p. +358 40 827 8434
restaurointi.halonen@gmail.com

49 MTH-OY, MARKKU HEINONEN ▶ S. 30

Viherlahdentie 349 D, 23360 Kustavi
+358 400 527 746, mth.raisio@gmail.com
- Metal works, construction works and
restorations, warm boat spaces for rent.

34 KUSTAVIN ASENTAJAT KY ▶ S. 30

p. +358 400 763 984, +358 40 584 3919,
+358 876 262, info@kustavinasentajat.fi,
www.kustavinasentajat.com
- HPAC work and design and heat pumps,
liquefied petroleum gas installations.

67 KUSTAVIN PUUVENE

Niittulantie 2, Asko Saloranta,
p. +35840 900 8872
asko.saloranta@kustavi.net
www.kustavinpuuvene.com
- Boats, bathrooms and renovations.

28 KUSTAVIN RAKENNUSLIKE OY ▶ S. 31

Parkkitie 7, p. +358 876 130, +358 400 782 381
- Construction engineer Tommi Aaltonen.

77 KUSTAVIN RAKENNUSPALVELU

ENGDAHL KY ▶ S. 30

Ilpo Engdahl, Laupustentie 208,
p. 877 406, +358 400 225 006,
ilpo.engdahl@outlook.com
- All construction work, also planning.

69 LITTOISTEN RAKENNUSPALVELU OY ▶ S. 31

Olli-Pekka Rantala, Luotsiasemantie 4,
p. +358 400 824 363

41 LÄNSI-SUOMEN KIINTEISTÖPALVELU OY
▶ S. 30

Jari +358 40 703 6533,
Johnny +358 40 512 8922
www.lansi-suomenkiinteistopalvelu.fi
- Construction, renovations, piers.

18 RAKENNUSTYÖ E. ENGLUND ▶ S. 30

Pajamäentie 119, p. +358 400 899 500
esa@rakennustyoenglund.fi,
www.rakennustyoenglund.fi

60 RAHIN RAKENNUS JA PUUTYÖ
Rahintie 151 p. +358 400 783 427/Tuomo
Vainio, +358 40 727 2900/Kaarina Aalto,
rahin.rakennus@gmail.com, fb/rahinrakennus
- Construction contracting.

65 SÄHKÖSE-VI OY
Rahintie 498, p. 0500 526 175/Seppo,
0500 524 263/Ville,
ville@sahkosevi.fi, seppo@sahkosevi.fi
- Electric contracting, wholesale and retail
sale of electrical components.

37 RAKENNUS-SIMPPA
Loukkukenkuja 3, simo.valtonen@kustavi.net
p. +358 41 4430110
- Foundation, construction and repair work.

78 RAKENNUSPALVELU SIUSLUOTO ▶ S. 31
Esa Siusluoto, Meriläntie 9, p. 050 633 03,
esa@siusluoto.fi, www.siusluoto.fi
- Construction contracting, excavation
service, cottage caretaker work, tree felling,
supply transports to the archipelago, etc.

**66 RAKENNUSSUUNNITTELU JOUNI
JOHANSSON**
Iniöntie 93, p. +358 40 715 7412
- Construction planning.

DIRECT SALES AND OUTLETS

76 FRIISILÄ FARM
p. 877 455, +358 40 548 7455
- Direct selling of potatoes and vegetables
at the Kivimaa summer market from June to
August, summer shop and - café at Friisiläntie
8, Also selling at Kustavi's Suvimarket in June-
August and Sale Majakka's yard.

81 JANNEN LOHI
Jannen Lohi's rainbow trout is freshly fished
for and grown in flowing water.
Make an order: Tuula Juslin,
p. +358 400 938 222.
www.jannenlohi.fi, FB Jannen Lohi

27 KUSTAVIN SUVITORI
At the Kivimaa from June to August
- Open Mon, Wed, Fri and Sat between 10
am to 2pm, evening flea market on Tuesdays
from 5 pm to 7 pm. More info www.kustavi.fi

71 LATOKARTANO, SAMI
Viherlahdentie 550, p. +358 50 547 8187
- Firewood and road levelling.

82 LEHTINEN, KARI JA MATTI
Iniöntie 532, p. +38 40 591 9700/Kari,
+358 40 557 6586/Matti
- Firewood and transport to islands.
- You may rent a dug out or a trailer for
transportation.

44 MERINEULE OY ▶ S. 32
Kivimaantie 24, p. 876 347, www.merineule.fi
- Knitwear factory, sewing shop and factory
outlet in the centre of Kustavi.

35 RANNIKON HUOLTOHOMMA OY
Peltoluhta Marko, Itärannantie 11,
p. +358 40 8729279,
huoltohomma@gmail.com
www.rannikonhuoltohomma.net
- Firewood delivered to your location.

56 ÄÄRITALO, ANTTI
Viherlahdentie 352 b, 23360 Kustavi
p. +358 40 548 7989
- Firewood.

ART AND HANDICRAFT SHOPS

70 KATRIINA KARIKOSKI
Iniöntie 70, p. +358 440 112 210,
katriinakarikoski@gmail.com
www.katriinakarikoski.com
- Art and ceramics.

**79 KUSTAVIN KÄSITYÖKYLÄ
KUSTAVIN SAVIPAJA** ▶ S. 32
Iniöntie 411 B, p. 845 7700
- Large ceramics factory outlet (also second



rate) and two-storied interior design shop,
silversmith, blacksmith's shop and textile
cottage, café and baguette kiosk, farm animals
and a playground. Check the opening hours:
www.kustavinsavipaja.fi

79 PARATIISIPAJA ▶ S. 32
Iniöntie 411 C (at Savipajan Käsiyökylä),
p. +38 2 848 4848. Candle factory outlet and
interior decoration shop. Check opening times
www.paratiisipaja.com

2 PETERZÉNS ▶ S. 27
Parattulan rantatie 16, Parattula
p. +358 50 350 8346, leontinap@gmail.com
www.peterzens.fi. Cozy archipelago restaurant
/Café, hotel, 14 unique thatched-roof cozy
cabins, factory outlet/exhibition, guest harbor,
designshop, garden golf and shop.

44 STUDIO DI MODA ▶ S. 33
Kärtyntie 5, +358 40 5960 636, Jutta Suonketo
- High-quality clothing for women.
- Warm and friendly service and fashion advice,
along with repair sewing.

26 TMI PIRJO ALITALO
Loukkukenkuja 2, alitalopirjo@gmail.com
+358 44 533 2247
- Loom-wowed rugs and other textiles.

24 VARTSALAN VANHA KOULU ▶ S. 25
Pirjo Laurila, Vartsalantie 118, p. 0400 199 757
- Café, guesthouse, candle shop, gift shop.

TAXIS

45 TAKSI JUKKA LAHTI ▶ S. 33
p. +358 400 226 419
www.kustavintaksi.fi
- Taxi 1+6 persons, wheelchair and stretcher
transport, minibuses 1+16 persons.

76 TAKSIPALVELU TEEMU VÄISÄNEN ▶ S. 33
p. +358 40 5876 106
taksipalvelu.vaisanen@gmail.com,
www.taksikustavi.fi
- Multipurpose vehicle taxi 1+6 persons.

46 TAKSI EERO RAUTANEN ▶ S. 33
p. +358 400 877 669, www.taksikustavi.fi
- Taxi 1+6 persons.

HEALTH CENTRE AND ENVIRONMENTAL HEALTH CARE

47 KUSTAVIN TERVEYSASEMA
Kaljaasikuja 4, More info www.kustavi.fi or
www.uusikaupunki.fi

DOCTOR'S APPOINTMENT/
booking Mon-Fri from 8 am to 10 am,
p. 8451 2401 (answering machine)

HOME CARE
p. +358 500 778 124

DENTAL CLINIC
p. 8451 2902 (answering machine)

HEALTH INSPECTOR
p. +358 44 700 5709

VET
p. +358 400 226 156

SAARISTOLÄÄKÄRIT ▶ S. 22
p. +358 600 100 33, 1.6.-15.8. open everyday
from 10 am to 8 pm.

BERTHS

6 KUSTAVIN LOOTHOLMA ▶ S.27
Kuninkaantie 193, p. +358 50 556 0440,
info@lootholma.fi, www.lootholma.fi
- Seasonal berths and guest harbour.
Children's playgrounds and animals in the
summer. A big beach. Event hall.

RENTAL ACTIVITIES

KUSTAVIN SAARISTOSAFARI OY
p. +358 40 548 7989/Antti,
+35840 551 4495/Rami
- Jet ski rental

78 HENKILÖNOSTIN VUOKRAUS ▶ S. 33
Esa Siusluoto, p. +358 50 63 303,
www.siusluoto.fi, esa@siusluoto.fi
- A mobile personnel hoist for rent Leguan
160 WD with or without a driver.
- painting works, tree felling and trimming,
safely with a lifting device.

23 TUULENTUPA
The house is rented for various public events.
Reservations: +358 2 842 6600

MARKETING AGENCIES

VIESTINTÄTOIMISTO INNOLLA OY
Kirsi Lindroth, p. +358 40 521 6332,
www.innolla.fi
Social media: FB Viestintätoimisto Innolla,
LinkedIn Kirsi Lindroth, FB, Instagram, Twitter,
Pinterest

ASSOCIATIONS

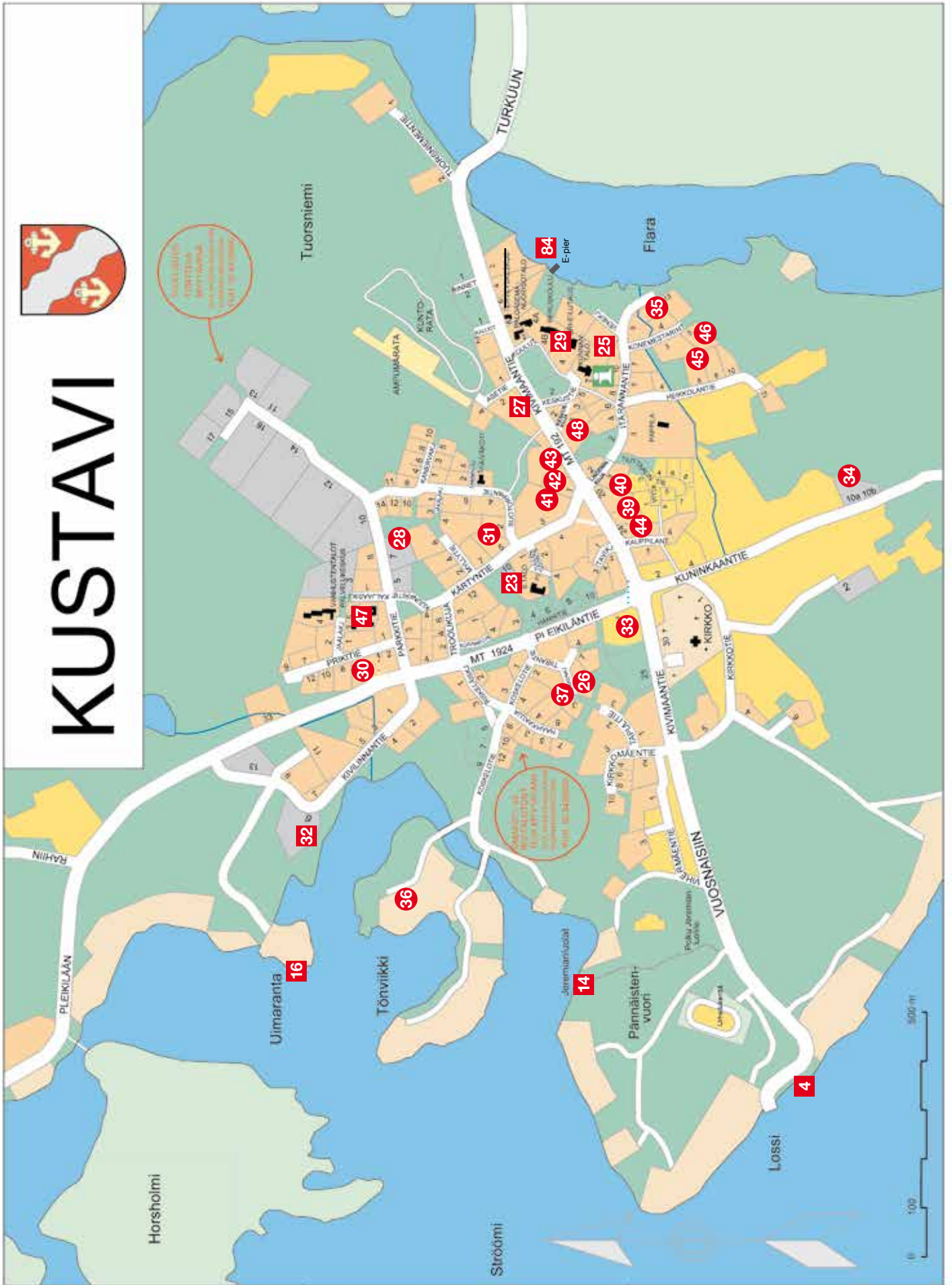
See page 35.

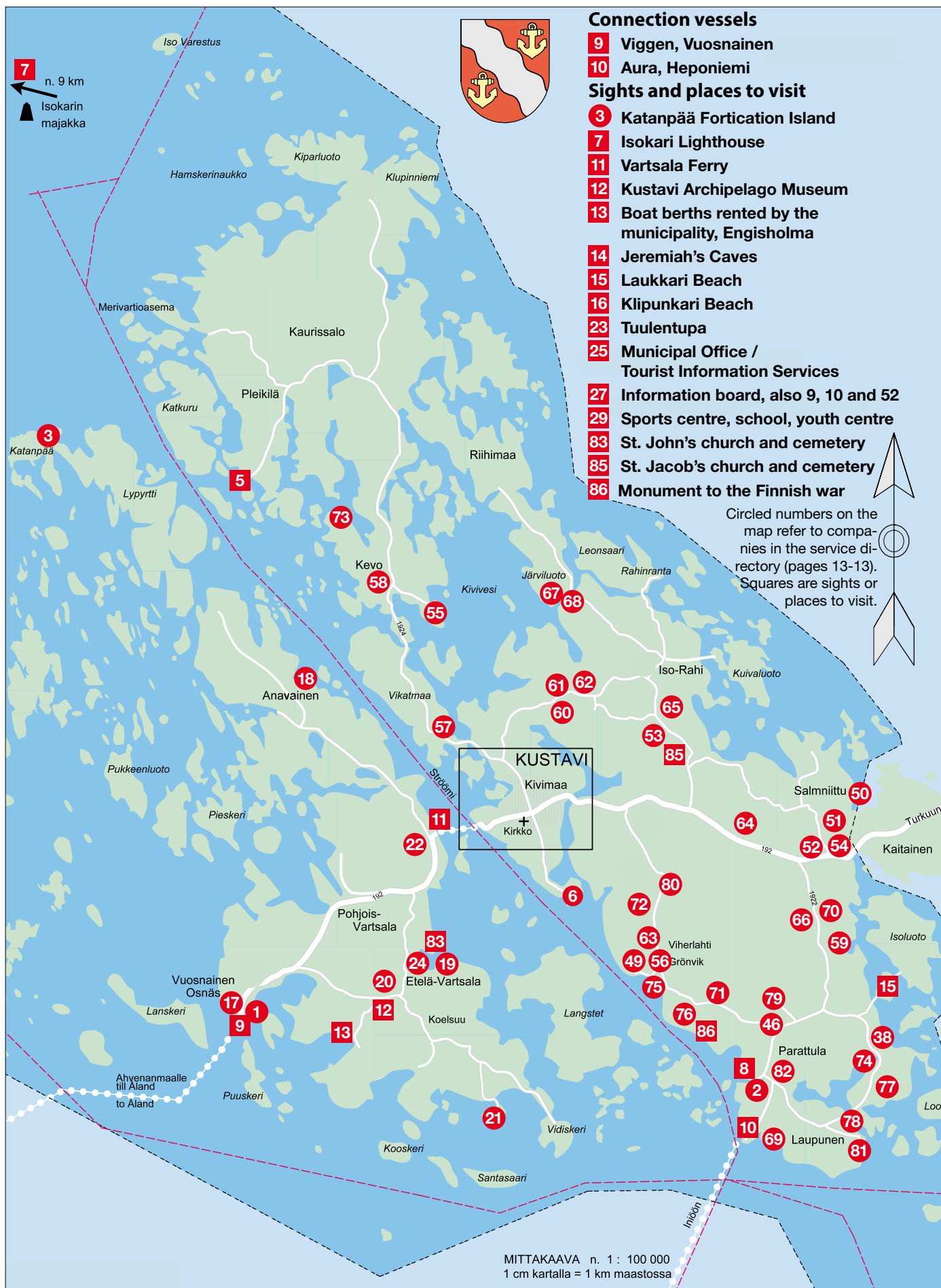
GENERAL
EMERGENCY NUMBER

112

MARINE RESCUE

0294 1000





Guest harbours

- 1** Vuosnainen
2 Peterzens
3 Katanpää
6 Lootholma

Guest berths / visiting harbours

- 4** Kivimaa
5 Kekoniitty
7 Isokari
32 Kalaranta
84 E-pier

Boat slipways

- 1** Vuosnainen
6 Lootholma
4 Kivimaa
8 Parattula

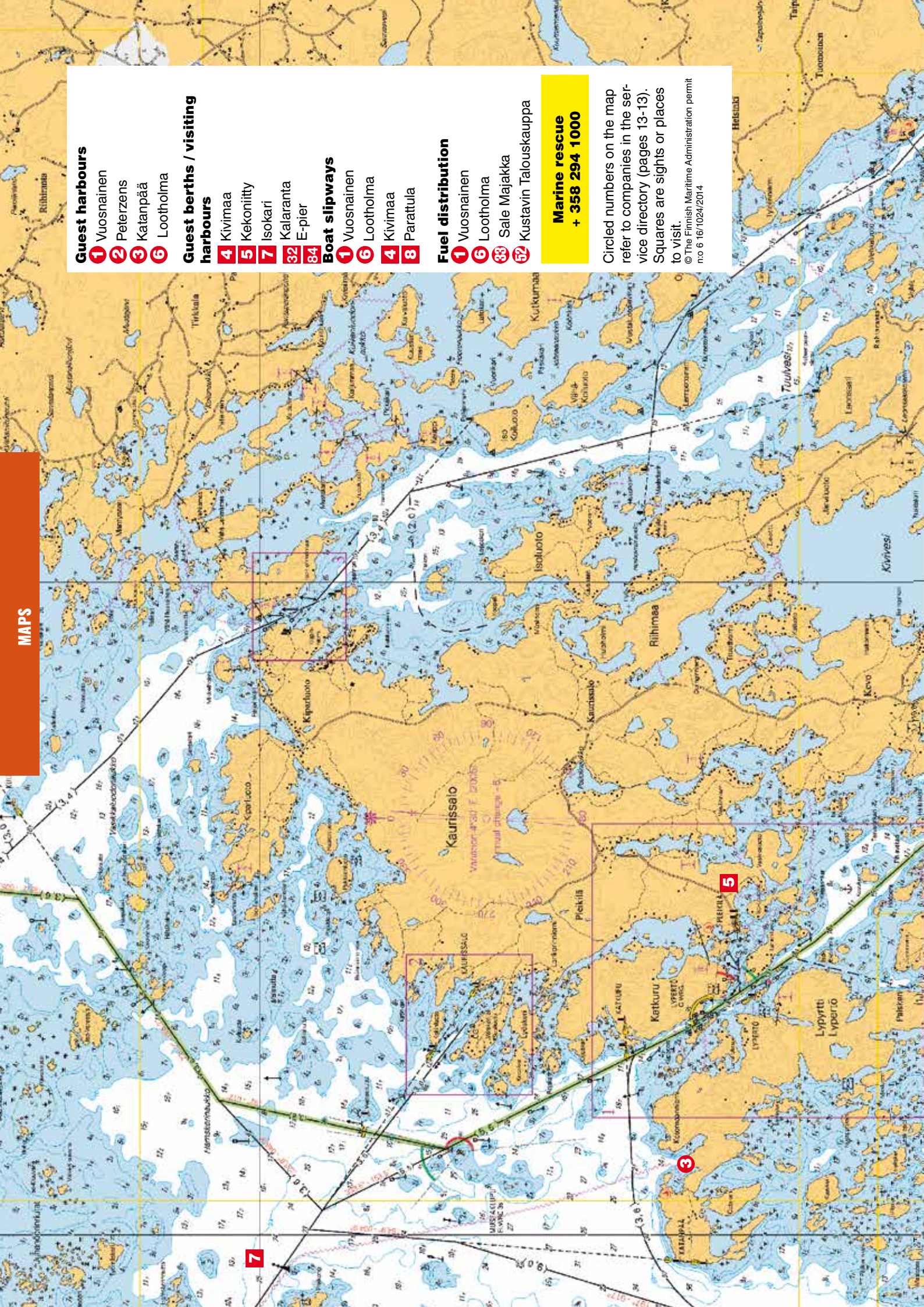
Fuel distribution

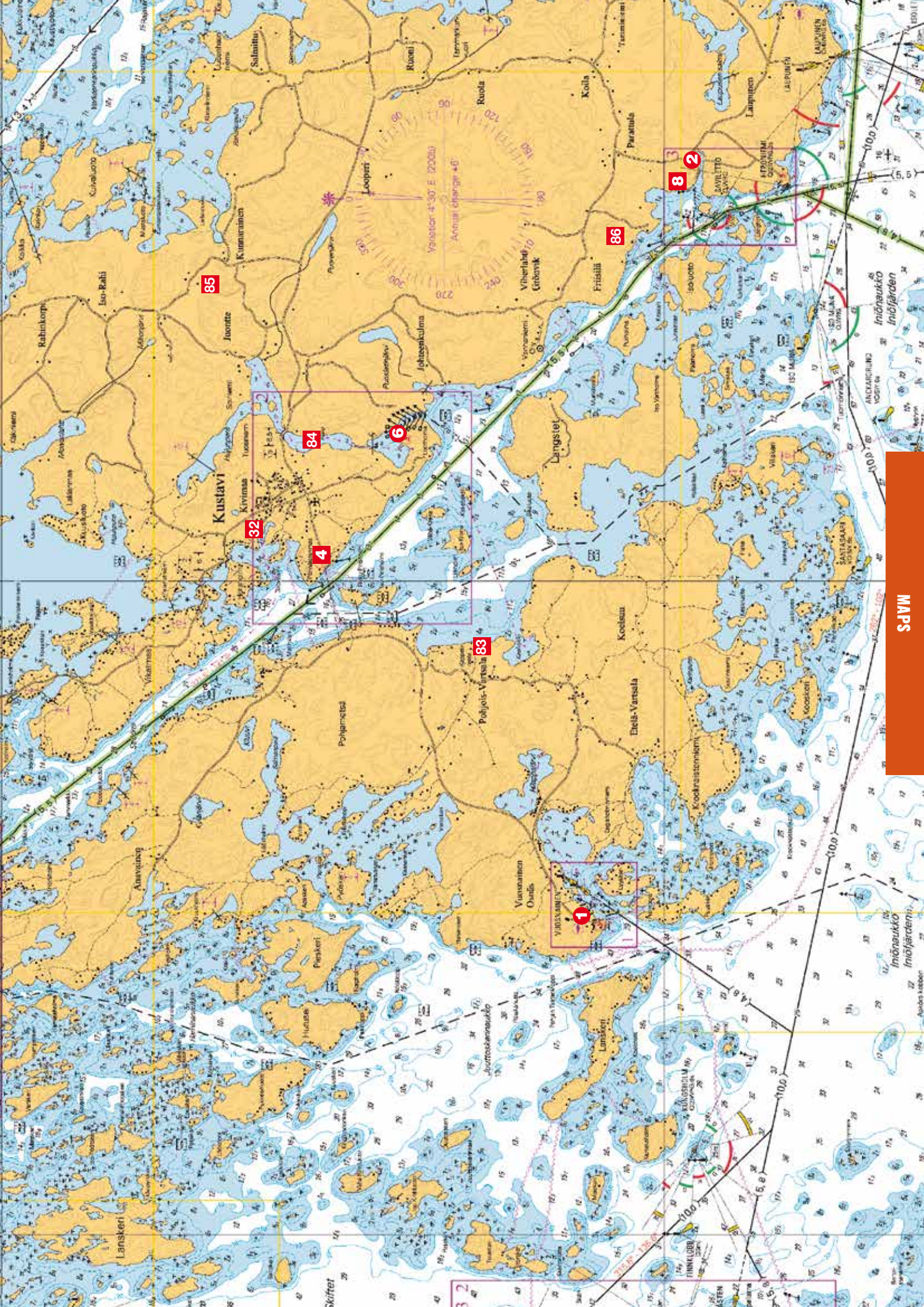
- 1** Vuosnainen
6 Lootholma
33 Sale Majakka
52 Kustavin Talouskauppa

Marine rescue
+ 358 294 1000

Circled numbers on the map refer to companies in the service directory (pages 13-13). Squares are sights or places to visit.

© The Finnish Maritime Administration permit
 no 6 16/1024/2014





CITIES AND MUNICIPALITIES

brändö Closer than you think.

Take a day trip from Kustavi by car or bike, or rent a cottage in the archipelago. **Welcome!**

Remember to check out the possibilities to move permanently to Brändö! Visit our homepage or call +358 (0)40-746 3596.

www.brandoo.ax

TAIVASSALO
The Great Baltic Herring District.





The archipelago has many secrets...
From **TAIVASSALO**
You will find them all.

www.taivassalo.fi

Visit Uusikaupunki

More than 400-year-old Uusikaupunki is a tourist attraction full of activities.

Uusikaupunki Tourist Information Office
Rauhankatu 10, tel. +358 50 420 5329
VisitUusikaupunki.fi | matkailu@uusikaupunki.fi

www.kustavi.fi

HEALTH CARE

 **Saaristolääkärit®**
• We serve your health •

Doctor's boat
p. 0600-100-33

1.6.-18.8. daily between 10-20

- Doctor's boat appointments in the Peterzen's harbour
- Doctor appointments and phone consulting
- Ordering the doctor boat to home
- Renewal of recipes straight to pharmacies
- Tick vaccinations

Schedule for Tick-coach and doctor boat: www.saaristolaislaakarit.fi

CAR REPAIR SHOPS

 **Autokorjaamo**

Kustavin Autokorjaamo
Kustavintie 5129
23360 Kustavi
P. +384 1502 5440
huolto@kustavinkorjaamo.fi



- Maintenance
- Repair
- Spare parts
- Air conditioning
- Tiers

Merkkillisen reilu. www.fixus.fi


GRINDING SUPPLIES

Aiming for efficiency

PUREVA

Oy Pureva Ab
Kustavi



www.pureva.com

SHOPS

Wherever you are.



Sale

Majakka

See summer opening hours at TOK.FI

mon-wed **8-21** • sat **8-18** • sun **10-18**
Pleikiläntie 2, 23360 Kustavi • tel. 010 764 3530 • tok.fi

Phonecalls 0,0835 € call + 0,1209 €/min.

SHOPS

Tehokkaat
valokuituliittymät
Kustavissa
toimittaa

Vakka-Suomen
Puhelin Oy

www.vsp.fi

Soita ja tilaa:
Puh. 02 8445 500
kuitu@vsp.fi



**KELTAINEN
PUOTI**
KUSTAVI

Tfn + 358 2 841 5670

- ★ giftware
- ★ business post office
- ★ travel services
- ★ laundry services
- ★ handicraft supplies
- ★ boots

Open:
Mon-Fri from 9 am to 5 pm
May-September
also Sat from 9 am to 1 pm

*Kustavin
Talouskauppa Ky*

Kustavintie 5175, 23360 Kustavi
Puh. (02) 877 735
050 331 6145

Food - Fuel
Café- Lunch weekdays 11-19

Open: Mon - Fri 06.00 - 19.00
Sat 06.00 - 19.00
Sun 10:00 - 19:00



ANTENNA SERVICES



KUSTAVIN ANTENNI
JA PESULA
0440 598 591
Ari Varjonen
Vartsalantie 175
Kustavi

Changes, installations and measurement
for antennas. Also consulting and supply sales.

SEA CRUISES AND FISHING TRIPS



SPORTFISHING GUIDE
Vesa Liukkonen

Fishing trips with professionals
on our safe and spacious boats.
We also arrange accommodation
and meals.

Call us about your wishes!

Add: Vuosnaistentie 621, 23360 Kustavi
Phone: +358 (0)400 526 353
Fax: +358 (0)2 841 7771
vesa.liukkonen@siliprofil.inet.fi

WASTE STATIONS AND TRANSPORT



**KULJETUS- JA
NOSTOPALVELU**
Markku Salminen

- Skip transports • Junk transports
- Earth-moving and hoisting work
- Sewage tank emptying • special transport

Markku // p. 0400 787 044

PROPERTY MAINTENANCE, WOODWORK, CLEANING

Saariston koti- ja siivousapu

- Home and cottage cleaning
- Window cleaning
- Painting work
- Yard work, grass cutting • Trailer, chain saw, reed cutter
- By boat to the archipelago • Roofs, gutter cleaning
- Whatever you want

Tanja and Timo Valtonen
Laupustentie 153 Kustavi, Valtonen@gmail.com
Tel. +358 44 968 2774, also at weekends

ROAD HAULAGE SERVICES

Kuljetuspalvelu
J. Siusuoto Ky
Kuninkaantie 10 c, 23360 Kustavi
Puh 0400 831426
info@jsiusluotoky.fi
www.jsiusluotoky.fi

Kuljetukset vaihtolava- ja kasettiyhdistelmillä

- Murskeet, sorat, hiekat
- Mullat, kuorikatteet, maisemakivet ym.
- Roskalavapalvelu, purkutyöt
- Lavettisiirrot, konelavasiirrot
- Nostotyöt, kappaletavarat
- Risujen ja puiden ajo
- Maatalousajot

Luotettava Kumppani






Juvanni sea-shore cottages

LOG CABINS BY THE SEA FOR SHORT- AND LONG-TERM USE.

GREAT OPPORTUNITIES FOR FISHING AND EXCURSIONS. BOAT SLIPWAY, CANOE RENTAL

Lasse Jalonen
VILISKERINTIE 27, 23360 GUSTAVS
TEL. +358 400 539 916,
+358 40 744 5916
WWW.JUUVANNI.FI

JUHLATILA Maininki

Occasion room for successful family events. Respecting traditions, yet still innovative and modern.

p. +358 400 954 731 | Keskuskuja 1 | 23350 Kustavi

Kustabin



Kärtyntie 5, Kustavi
p. +358 40 845 8844,
FB: ravintolakustavinkrouvi

Tasty pizza and other grill products year-round.
Alcohol license.

krouvi

Tamminiemi cottages

The peace of nature in 2-6 person cottages by the sea, good fishing area, berths, cottages for short- and long time renting and affordable summer rooms by the Archipelago trail.



Tiina Mäenpää | Laupustentie 108,
p. +358 41 1809 | tiina@tamminiemenlomamokit.fi
fb/tamminiemen lomamokit | www.tamminiemenlomamokit.fi



Vartsalan Vanha Koulu

Vartsalantie 118, 23360 Kustavi
0400 199 757 www.vartsalanvanhakoulu.fi
Meritie N60°31.1834', E021°18.7834'

Café, guesthouse
candle shop, gift shop.





From Easter to November:

ARCHIPELAGO BUFFET

The most delicious and varied selection of fish and vegetables in the area. Open every day between June and August, during Easter and between May and September at weekends from 11:30 am to 4:30 pm. Open for groups also at other times, by appointment.

CAFÉ AND SHOP

A wide range of the bakery's own pastries, ice-creams, sweets, refreshing drinks, foods and numerous other products, such as handicrafts, clothes and souvenirs. Waterfront terrace and fully licensed.

GUEST HARBOUR, PRIVATE SAUNA, ACCOMMODATION

Approximately 30 guest harbour berths. The best sauna with sea view in the area and accommodation for various needs for up to 40 persons.



From midsummer to beginning of august

SEASON'S FINEST DELICACIES

Legendary herring patties, fresh salads, well-known hamburgers and all the other treats served to table in the terrace and in the dining room daily from 5 pm to 8:30 pm.

SUMMER BAKERY

The bakery's products can be bought from the café. Including Meriasema's famous archipelago bread, buns, pies, cakes and cookies. Hand-made, from great ingredients without additives.



BOAT FOLK'S FAVOURITE RESTAURANT 2018*

"The best buffet in Finland"
"Amazing food"
"Such a lovely setting"

*Boat magazines' reader poll

Guest Review Awards 2018 Vuosnaisten Meriasema

8,7
out of 10

Booking.com

CAFÉ - RESTAURANT - BEACH TERRACE - ALCHOL LICENSE - SUMMER BAKERY - ACCOMMODATION - SAUNA-BY-ORDER - GUEST HARBOUR - FUEL FOR BOATS - WATER - BOAT BERTHS - LPG

Vuosnaistentie 616, 23360 Kustavi | Puh. 02 877 512 | meriasema@kustavi.net | www.vuosnaistenmeriasema.com
www.facebook.com/vuosnaistenmeriasema

PZÉNS

Quality archipelago atmosphere.



14 thatched-roof, cozy hotel cabins.
Full services along the island ring-road.
Hotel, restaurant, shops, sun-terrace,
grocery, garden-golf, harbour.

Parattulan rantatie 16, 23360 Kustavi
Reservations; leontinap@gmail.com.
www.peterzens.fi tel. 050 4653387




**FASCINATING HISTORY IN THE
HEART OF ENCHANTING NATURE**



**GUEST HARBOUR OFFERING
EXCELLENT SERVICE**

info@katanpaa.fi
Harbour/Sauna's 0400590 868
Café/Accommodation 045 128 3508




**WELCOME TO THE TRADITIONAL AND
PEACEFUL LOMAVALKAMA**

- tent and caravan sites, cottages, year-round one-room apartments
- camps, guided trips in the archipelago, celebration and conference services, etc.
- excellent swimming beach and sauna
- wonderful fishing possibilities year round



Valkamantie 81, Kustavi – tel. +358 400 621 490
info@lomavalkama.fi – www.lomavalkama.fi

**WELCOME FOR FEAST IN
BEACH RESTAURANT**



*SEASONAL SPOTS AVAILABLE
Variety of holiday apartments
for rent year-round*



**MIDSUMMER EVE DANCE AT THE END OF AUGUST. HARBOUR,
CAMPING SITE, BEACH, DISC GOLF, FUEL FOR BOATS 24H, YURT
ACCOMMODATION...READ MORE LOOTHOLMA.FI**

ART TEATRO

Circus Festival of Archipelago
4.7.—4.8.2019 Circus Sagittarius
3.7.—1.8.2020 La Sirène

**"All the elements circus must have - amazing
numbers, humor and nostalgic atmosphere."**
Turun Sanomat



"Kustavi is a circus"

lippu.fi

0600 900 900
1,98 €/min + pvm
FIN ■ SWE ■ ENG



A month-long circus festival in a log circus in the middle of the most beautiful archipelago landscape. Enjoy ArtTeatro's circus art, circus school, circus summer camps and show-stopper performances also year round. Cafe Trapeze in service.

Reservations and further information: [info@artteatro.com/](mailto:info@artteatro.com)
www.artteatro.com/ tel. +358 50 4307928

ArtTeatro, Salminiituntie 37, 23660 Kustavi.

KUSTAVI **PIENKONEKESKUS**



Alumiiniveneiden aateliala



Alumiiniveneet

SMALL MACHINE - AND BOAT MAINTENANCE

HONDA
MARINE



YAMAHA



MERCURY

 **SUZUKI**

SUVI ja
PALTA veneet

YANMAR

Authorized sales- and repair shop
Store features a wide range of boating supplies, etc.
Winter storage of boats and motors
Insurance company approved repair shop

Rahintie 276, Kustavi

info@pienkonekeskus.fi www.pienkonekeskus.fi

Rami 040 551 4495 Tommi 050 461 9052 Aku 044 040 4313

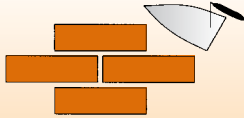
MTH-OY

Markku Heinonen, puh. 0400 527 746

Metallityöt, rakennustyöt ja saneeraukset.
Vuokrataan lämmintä säilytystilaa
esim. veneille ym.

Viherlahdentie 349 D ■ 23360 Kustavi
■ mth.raisio@gmail.com

Kustavin Rakennuspalvelu Engdahl Ky



Ilpo Engdahl,
Master Builder
Laupustentie 208
puh. 0400 225 006,
ilpo.engdahl@outlook.com

*All Construction work,
also planning*

Kustavin asentajat Ky

KAIKKEA LVI-ALALTA

- * putkityöt * jätevesiratkaisut *
- * ilmalämpöpumput maalämpö *
- * ilmavesilämpöpumput *
- * nestekaasuasennukset *
- * jätevesilaitosten huollot *
- * kattoturvatuotteet * öljypoltinhuollot *
- * hydrauliletkut * remontit * saneeraukset *
- * vesisuodattimet * tarvikemyynti *

Kuninkaantie 10 A, Kustavi
Puh. 0400 763 984, 040 584 3919
info@kustavinasentajat.fi
www.kustavinasentajat.fi



RAKENNUSTYÖ E. ENGLUND

MYÖS
SAARI-
KOhteet!

AVAIMET KÄTEEN RAKENNUS- PALVELUT TAKUUTYÖNÄ

Kaikki rakennusalan työt
suunnittelusta toteutukseen.
Kauttamme myös LVIS sekä lupakuvat.

SOITA 0400 899 500



**Luotettava
Kumppani**

Yrittäjät
KUSTAVI

esa@rakennustyoenglund.fi • www.rakennustyoenglund.fi
facebook.com/ Rakennustyo Englund

Länsi-Suomen Kiinteistöpalvelu Oy



CONSTRUCTION RENOVATIONS • JETTIES

Johnny 040 512 8922, Jari 040 703 6533
www.lansi-suomenkiinteistopalvelu.fi
Kärtyntie 3 23360 Kustavi



Parkkitie 7, 23360 Kustavi
Tel. +358-(0)2-876 130
Fax +358-(0)2-876 311

■ Construction contracting

■ Excavation and
earth moving work

■ Construction and
structural design

■ Construction Engineer
Tommi Aaltonen
Tel. +358-(0)400-782 381

SIUSLUOTO

RAKENNUS- JA KIINTEISTÖPALVELU

Services: construction • earthmoving work
cottage caretaker work • tree felling • material transports
to the islands • jetties and buoys • sales and installation

www.siusluoto.fi

Esa Siusluoto, B.Eng. • Mastotie 1, Kustavi
Mobil +358 50 633 03 • esa@siusluoto.fi

EARTH-MOVING



KAIVUUPALVELU
Petteri Lehtonen
Kustavi

0400 923 456
petterinkaivuupalvelu@gmail.com

CONSTRUCTION SERVICES, HPAC

Littoisten Rakennepalvelu Oy

Kaikki rakennusalan työt 27 vuoden kokemuksella

Uudisrakentaminen, perustukset, hirsirakentaminen,
talopakettipystytykset, terassit ja laiturit. Kaikenlainen
korjausrakentaminen mm. kylpyhuone- ja
saunaremontit, sisä- ja ulkomaalaukset, kattoremontit.

Rantala Olli-Pekka
Luotsiasemantie 4
23360 Kustavi
0400 824 363
op.rantala@dnainternet.net

Raivonen Heikki
Puolaajankuja 4
20660 Littoinen
0400 487 165



Nimestään huolimatta kustavilainen

EARTH-MOVING

- Crushed stone, soil, gravel, rocks etc.
- Road constructions and renovation work
- Excavation and earth-moving works



Romu Urpo Oy

Viherlahdentie 154, 23360 Kustavi
Timo Urpo 0400 521 203

EARTH-MOVING



Kaivonporaus Stenman Ky

- Porakaivot
- Porakaivojen huoltotyöt
- Lokakaivojen tyhjennykset saarissa

Hannu Stenman 0400 826 901
kaivonporaus.stenman@gmail.com | www.kaivonporausstenman.fi

MAARAKENNUS PASI ÄÄRINEN

040 514 2000 pasi.aarinen@gmail.com

Earthworks - experience and professional



maarakennuspasi.fi

- Foundation work for buildings, yards, roads
- Water pipes and drainage
- Drains and rainwater drainage systems
- Ground filtering systems
- Small-scale rock excavation and diamond drilling
- Manufacture and sale of firewood

Maarakennus Pasi Äärinen Sarkatie 17 23360 Kustavi

EXPERIENCES

RAHIN Kotieläinpiha

Farm animals.
Donkeys, cows, goats
etc. Open June-
August 12-18 every
day!

Rahintie 561,
23360 Kustavi
Marjatta +358 40 535 5588
Ilpo +358 500 826 299

Welcome!



ART AND HANDICRAFT SHOPS

Koko perheen idyllinen retkikohde Saariston Rengastiellä

Kustavin Käsityökylä

♥ KERAMIIKAN ISO TEHTAANMYYMÄLÄ
- talo täynnä ihanaa keramiikkaa, oman malliston sisustus-
tuotteita ja kortteja, herkkuja, keittiötavaraa, matkamvlistoja,
erikoiseriä, Kustavi-tuotteita yms.

♥ UPEA SISUSTUS- JA VAATEMYYMÄLÄ
- mahtava valikoima vaatteita, (mm. King Louie, Zhenzi,
Mademoiselle YéYé, Pulz Jeans) ja sisustusta (mm. Madame
Stolz, Svanefors, Fondaco) sekä tietysti oman malliston
kynttilät ja pesvaineet

♥ KAHVILA - maailman parhaat munkit!

♥ SEPÄNPAJA, HOPEAPAJA, ^{uutuus!} LASIHYTTI:
käsityöläisten työnäytöksiä joka päivä

♥ LEIKKIPAikka, PUPUJA JA LAMPAITA

Tervetuloa! KESÄLLÄ JOKA PÄIVÄ
klo 9-20



**KUSTAVIN
SAVIPAJA**

paratiisi-
paja

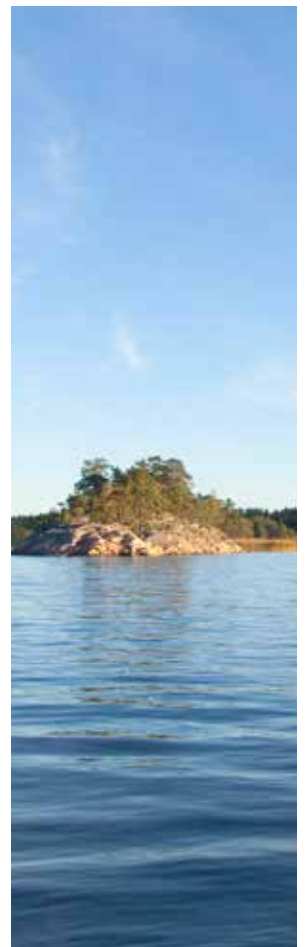
Iniöntie 411, Kustavi p. 02 845 7700
www.kustavinsavipaja.fi www.paratiisipaja.fi
facebook: Kustavin Savipaja / Kustavin Käsityökylä
insta: @kustavinsavipaja @paratiisipaja #kustavinsavipaja

DIRECT SALES AND OUTLETS



Kotimaisten
neulevaatteiden
verkkokauppa
www.merineule.fi

Outlet Kustavin keskustassa



ART AND HANDICRAFT SHOPS

MUOTIA KESKELLÄ KYLÄÄ



VAATEPUTIIKKI
Studio di Moda
 Kivimaantie 24, KUSTAVI p. 040 596 0636



AVOINNA KEVÄÄSTÄ SYKSYYN - KESÄLLÄ PIDEMPÄÄN

BOAT SERVICES



SIUSLUOTO
VENEPALVELU

WINTER STORAGE OF BOATS

Cold and heated space, also space in yard

•

Liftings, launches and transportations, max 10 t

•

Maintenance, bottom paintings, washing, waxing and varnishing, etc.

•

Freight transports to the Archipelago

•

Jetties and buoys, sales and installation

www.siusluoto.fi

Esa Siusluoto, B.Eng. • Mastotie 1, Kustavi
 Mobile +358 50 633 03 • esa@siusluoto.fi

TAXIS

TAKSI

Palvelevat taksit Kustavissa
Kuljetukset 1+6 hengen tila-autoilla

Taksi Eero Rautanen

0400 877 669

★

Taksipalvelu
Teemu Väisänen

040 5876 106

www.taksikustavi.fi

RENTAL ACTIVITIES



LEGUAN
PASSENGER
HOIST LEASING

Extends up to 15,9 m.

www.siusluoto.fi

BA (Eng) Esa Siusluoto • Meriläntie 9, 23360 Kustavi
 Mobile: +358 50 633 03 • esa@siusluoto.fi

ASSOCIATIONS

KUSTAVIN MATKAILUYHDISTYS RY
 organises:

- guided cruises
- also other excursions to order
- St. Knut's Day dance
- authorised travel guides throughout the year

For more information:
 Kustavi Tourist Information
 Services +358 2 842 6620 (June-August)
matkailuneuvonta@kustavi.fi
www.kustavi.fi/tapahtumat



TAKSI JA TILAUSAJOLIIKENNE

JUKKA LAHTI

0400 - 226419

Taksi kulj. + 6 hlö, esteetön auto
 Pikkubussi: kulj. + 16 hlö esteetön
 Pikkubussi: kulj + 19 hlö
 Pikkubussi: kulj. + 22 hlö
 Lisätiedot: www.kustavintaksi.fi





Saariston ATK palvelut kätevästi Kustavista.
Ota yhteyttä puhelimitse: 045-6972534
tai lähetä sähköpostia: atk@daviniki.fi



www.daviniki.fi

B&B,

cider tasting and restaurant in central Kutavi.
For reservations call +358 465 927668
or write to us reservations@saaristosiideri.fi

www.saaristosiideri.fi



spauna

à la carte restaurant
take away
lunch buffet
bar-café
grocery and lifestyle store
cottages in amazing scenery
boat and bike rental
plenty of summer events

**HOLIDAY VILLAGE
SPAUNA**
vuosnaistentie 617
kustavi
044 2410066
www.spauna.fi



BOTHNIAN SEA NATIONAL PARK

Welcome to the outer archipelago and its beautiful nature

The Bothnian Sea National Park consists mostly of a ribbon of outer archipelago isles and islands that stretches narrow and (160km), through Merikarvia to Kustavi. Coast of archipelago is dispersed and has a lot of reefs. Islands are quite small and the waters surrounding them low. National Park is the largest sea nature re-

serve in Finland. The park was established in 2011. 98% of the park's tota are consists of marine water. The scattered islands and skerries inside the park have a total area of about 15 km². All of Finland's national parks are managed by Metsähallitus Natural Heritage Services. Sights within the national park in the Kustavi area include

Isokari Lighthouse Island and Katanpää.

For more information, contact the municipal tourist information services or the Archipelago Visitor Centre Sinisimpukka, +358 2 05 64 4620, sinisimpukka@metsa.fi www.luontoon.fi, www.selkameri.fi



ASSOCIATIONS

Contact information for active operators

EL KUSTAVIN YHDISTYS RY

Harry Näse p. 050 523 2776
- Monthly meeting on the first Thursday of every month.

ISOLUODON KYLÄTOIMIKUNTA

Chairperson Tapio Kordelin,
puh. 0400 521 248.

KUSTAVIN AHTO RY.

Ari Lagerström 0500 531 055
- Various sports throughout the year.

KUSTAVIN MARTAT RY

www.martat.fi,
chairperson Asta Koskinen 040 740 6763
- household and handicraft advising, excursions and common evenings

KUSTAVIN KIRJALLISUUSYHDISTYS RY.

info@vkkustavissa.fi, p. 044 952 1388,
www.vkkustavissa.fi

KUSTAVIN MATKAILUYHDISTYS RY S.33

Chairperson Laura Nummela, p. 050 375 3109,
laura.nummela@kustavi.fi

KUSTAVIN TAIDEYHDISTYS RY.

Kivilinnantie 9 B 20, puh. 040 504 5414
kaarina.kylmala@kustavi.net
www.kustavintaide.fi,
FB: Kustavin Taideyhdistys ry

KUSTAVIN URHEILUKALASTAJAT -99 RY

Chairperson Ahti Veijola, p. 050 430 4395

KUSTAVIN YRITTÄJÄT RY.

Chairperson Irja Skyten-Suominen
p. 0400 787 997, kustavin@yrittajat.fi

KUSTAVIN VESIOSUUSKUNTA

www.vokkustavi.fi
Jussi Rantanen, puh. 0400 765 133
Kalervo Korvensyrjä, puh. 0400 530 294

POHJOIS-VARTSALAN VESIOSUUSKUNTA

www.pvvok.net, Kustavi,
p. 0400 826 901/Stenman,
0400 647 337 /Lehtonen.

RAHIN SEUDUN KYLÄYHDISTYS

Chairperson Birgitta Eskola
p. 050 345 7662
- Events, Rental of chairs/050 577 3638,
Jarkko Vähätalo.

SAARISTON KOIRAKAMUT RY

Sirpa Koskinen puh. 044 0682 192, Haahkakuja 4,
23360 Kustavi, FB: Saariston koirakamut

VARTSALAN KYLÄTOIMIKUNTA

Chairperson Antti Likitalo, p. 0400 988 468
- Various events and rental of seats:
0400 539916, Lasse Jalonen.

KUSTAVIN VPK RY.

www.kustavinvpk.fi, kustavinvpk@vs-alpe.fi

LC-KUSTAVI

puh. 0405487989 Antti, 0400625784 Jouni.

MLL KUSTAVIN PAIKALLISYHDISTYS

- Familycafé etc.
Chairperson Milla Halonen, puh. 040 827 8434,
restaurointi.halonen@gmail.com,
Facebook/MLL Kustavi

SUOMEN PUNAINEN RISTI, KUSTAVIN OSASTO

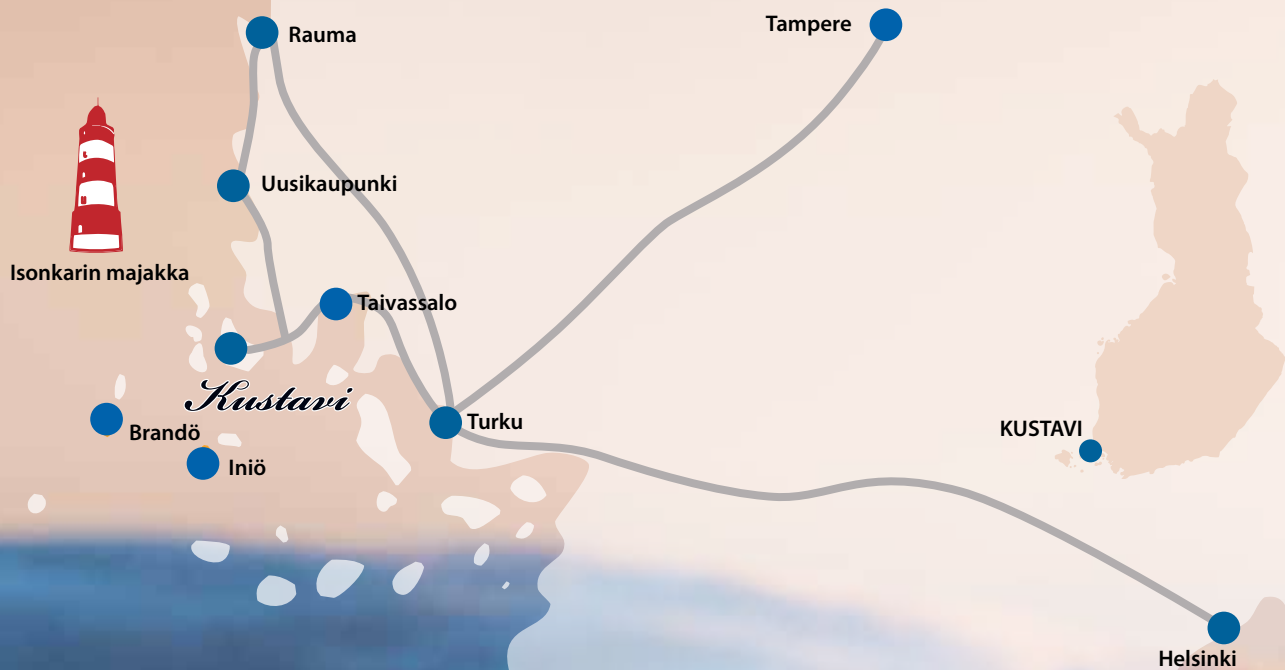
Chairperson Tarja Nieminen, puh. 044 578 4215
tarja.nieminen@kustavi.fi,
www.kustavi.punainenristi.fi

TEATTERIYHDISTYS TUULENHUUTAJAT RY

Chairperson Anja Siusluoto
p. 040 564 9965, siusluotoanja@gmail.com,
- Summer theatre activities.

VESILINNIEMEN VESIENSUOJELUYHDISTYS

chairperson Jarkko Turvanen, puh. 0400 827 827,
jarkko.turvanen@gmail.com



KUSTAVI

Is located in Archipelago of Southwest Finland. Distance from Helsinki is 240 km, from Turku 69 km and from Uusikaupunki 49 km. Åland's Brändö can be reached in less than 40 minutes. Population are more than 900, and there are over 3000 summertime residences in Kustavi.

TRAVEL INFO

A tourist adviser serves in the municipal office from Monday to Saturday in June-August
p. +358 2 842 6620
matkailuneuvoja@kustavi.fi

Kustavi Municipal Office
Keskustie 7, 23360 Kustavi
p. +358 2 842 6600, fax +358 2 842 6625
firstname.lastname@kustavi.fi
www.kustavi.fi
Open Mon-Fri from 8.15 am to 4 pm

Library
p. +358 2 842 6630, kirjasto@kustavi.fi
Open Mon from 3 pm to 6 pm,
Wed from 3 pm to 7 pm,
Thu from 10 am to 4 and, Fri from 1 pm to 6 pm
www.kirjasto.kustavi.fi

© Municipality of Kustavi
Layout: Mainostoimisto Grafesko Oy
Photos: Juha Karikoski, Esko Ruoranen,
Pirjo Ilkka, Vesa Liukkonen

www.kustavi.fi

